

# SANYO

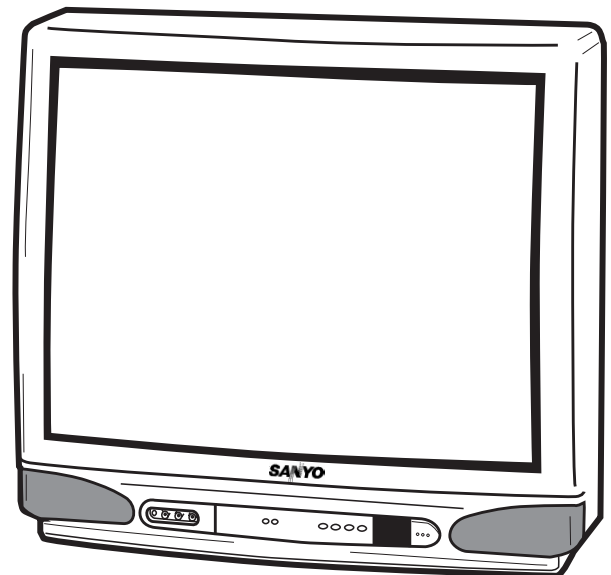
## Colour Television Service Manual

# CE28SN3-C

### Model CE28SN3-C

Service Ref.No.: CE28SN3-C-12

PRODUCT CODE: 111328207  
ORIGINAL VERSION: Chassis No.: EB4-A (MKII)



Give complete "SERVICE REF. NO." for parts order or servicing, it is shown on the rating sheet on the cabinet back of the TV set.

**Note**  
This TV receiver will not work properly in foreign countries where the television transmission system and power source differ from the design specifications. Refer to the specifications for the design specifications

#### Contents

|   |       |
|---|-------|
| Safety precautions/Specifications ..... | 2     |
| Block diagram .....                     | 3     |
| Circuit description .....               | 4-5   |
| Cabinet Disassembly .....               | 6     |
| Service control adjustment .....        | 7     |
| Circuit alignment .....                 | 8     |
| Important notice .....                  | 9     |
| Special Function .....                  | 10    |
| Cabinet Parts List .....                | 11    |
| Electrical Parts List .....             | 12-20 |

---

---

## SAFETY PRECAUTION

- |  |  |
|--|--|
| <p>1: An isolation transformer should be connected in the power line between the receiver and the AC line when a service is performed on the primary of the converter transformer of the set.</p> <p>2: Comply with all caution and safety-related notes provided on the cabinet back, inside the cabinet, on the chassis or the picture tube.</p> | <p>3: When replacing a chassis in the cabinet, always be certain that all the protective devices are installed properly, such as, control knobs, adjustment covers or shields, barriers, isolation resistor-capacitor networks etc. Before returning any television to the customer, the service technician must be sure that it is completely safe to operate without danger of electrical shock.</p> |
|--|--|

## X-RADIATION PRECAUTION

The primary source of X-RADIATION in the television receiver is the picture tube. The picture tube is specially constructed to limit X-RADIATION emissions. For continued X-RADIATION protection, the replacement tube must be the same type as the original including suffix letter. Excessive high voltage may produce potentially hazardous X-RADIATION. To avoid such hazards, the high voltage must be maintained within specified limit. Refer to this service manual, high voltage adjustment for specific high voltage limit. If high voltage exceeds specified limits, take necessary corrective action. Carefully follow the instructions for +B1 volt power supply adjustment, and high voltage adjustment to maintain the high voltage within the specified limits.

## PRODUCT SAFETY NOTICE

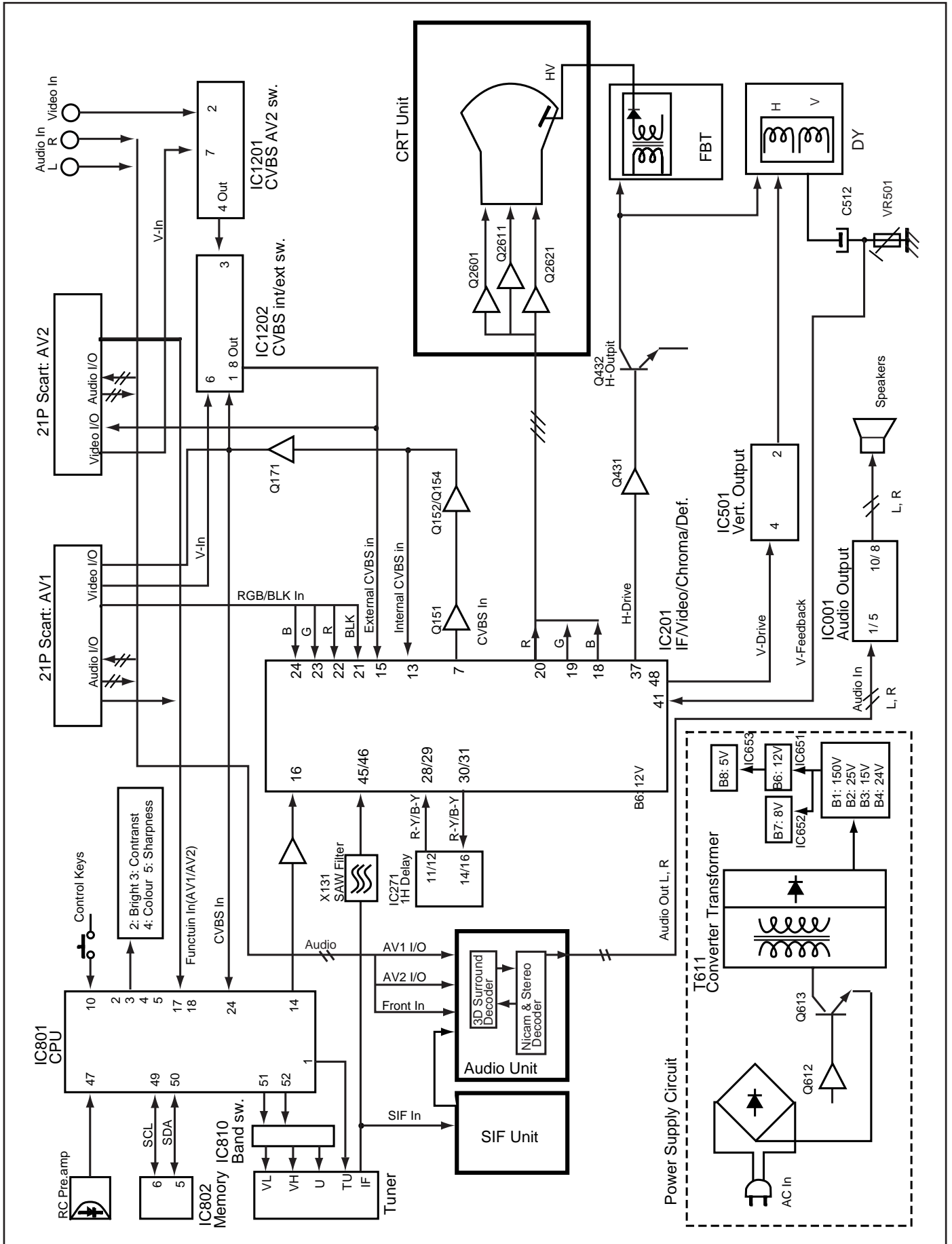
Product safety should be considered when a component replacement is made in any area of a receiver. Components indicated by mark  $\Delta$  in the parts list and the schematic diagram designate components in which safety can be of special significance. It is particularly recommended that only parts designated on the parts list in this manual be used for component replacement designated by mark  $\Delta$ . No deviations from resistance wattage or voltage ratings may be made for replacement items designated by mark  $\Delta$ .

## PRODUCT SPECIFICATIONS

|                            |   |
|----------------------------|---|
| Power source               | AC 220~240V, 50Hz   |
| Television system          | System B/G  |
| Colour system              | PAL/NTSC 4.43   |
| Receiving channel          | VHF: E2-E12<br>CATV: X, Y, Z, S1-S41<br>UHF: #21~69                     |
| Aerial input impedance     | 75 ohm  |
| AV terminal                | AV1: CENELEC standard (with RGB/S-inputs)                               |
| 21 Pin socket              | AV2: CENELEC standard<br>AV2: RCA Terminal, Video and Audio (L/R) input |
| Sound output (Music)       | 12 watts x 2  |
| Picture tube               | 70cm diagonal, 110 degree   |
| (Visible picture diagonal) | 66cm  |
| Dimensions (WxHxD)         | 628 x 567 x 469mm   |
| Weight                     | 30.4 Kg   |

# BLOCK DIAGRAM

This is a diagram for all models and therefore differs slightly from the actual block diagram.



# CIRCUIT DESCRIPTION

## 1. POWER SUPPLY

The power supply circuit of the EB4-A chassis is composed of a rectifier smoothing circuit, an oscillation circuit, a control circuit and an output rectifier circuit. The AC input voltage is full-wave rectified by the rectifier smoothing circuit, and an unstable DC voltage is generated at both terminals of the smoothing capacitor C607. This voltage is input to the oscillation circuit. The oscillation circuit is provided with a blocking oscillator circuit that switches the switching transistor Q613 ON and OFF, and an oscillation frequency and a duty square wave pulse are generated in the input windings according to operation of the control circuit. A square-wave pulse whose size is dependent on the turn ratio of the input and output windings is obtained in the output winding. This is rectified in the output rectifier circuit, and the desired DC voltage is obtained.

## 2. IF & DEFLECTION (TDA8361)

The IF output signal from the tuner passes through the SAW filter, and it is input to pin45 and pin46 of IC201. The signal input to the IC passes through the IF amplifier, video detection and video amplifier circuits and is output from pin7 as a composite video signal. And after this signal is converted to impedance at Q151, supplies to the video and chroma amplifier stages. The sync.-separation circuit separates the video signals applied to pin13(internal video signal) or pin15(external video signal) to vertical- and horizontal-sync. signals respectively. The horizontal oscillator requires no external components and is fully integrated. The oscillator is always running when the start-pin36 is supplied with 8V. Horizontal drive signal is output from pin37. VR361 is for adjustment of the horizontal centring. The separated vertical-sync. signal from sync. separation circuit passes through the vertical-separation circuit, and applied to trigger divider circuit. The horizontal oscillation pulse and input vertical sync. pulse are monitored by the trigger divider circuit, and switching 50Hz and 60Hz system, the vertical amplitude automatically adjusted for 50Hz and 60Hz. The output signal from the trigger divider is triggered vertical oscillation circuit consisting of C351, R352 and pin42, and vertical drive pulse is output from pin43. VR501 is for changing the amount of AC feedback applied to pin41 and for adjustment of the vertical amplitude.

## 3. VIDEO CHROMA & R.G.B. (TDA8361)

The composite video signal output from the pin7 of IC101 passes through Q151-Q154, and it is supplied to pin13. The external video signal output from SCART is supplied to pin15. The video signal input to pin13 or pin15 is separated to luminance (Y) signal and chroma signal in IC201. These pins are used in common with H/V-sync. separation input. The peaking of Y signal is adjusted by DC voltage of pin14. ("SHARPNESS" control) The chroma signal is divided into R-Y and B-Y

chroma signals, demodulated in IC201, and output from pin30 (R-Y) and pin31 (B-Y). These chroma signals pass through the 1H delay line circuit (IC271), and they are input to pin29 (R-Y) and pin28 (B-Y). These R-Y/B-Y signals pass through RGB matrix circuit and RGB selector circuit of IC101. The internal RGB signals are generated in RGB matrix circuit and the RGB selector, consisting linear amplifiers, clamps and selects either the internal RGB signals or the external RGB signals input from pin22(R), pin23(G), pin24(B). Selection is controlled by the voltage at the RGB switch control (pin21) and mixed RGB modes are possible since RGB switching is fast. The RGB switch also functions as a fast blanking pin by blanking the RGB output stages; here internal and external RGB signals are overruled. The colour gain is controlled by DC voltage of pin26. ("COLOUR" control) The contrast control voltage present at pin25, and the brightness control voltage present at pin17 controls DC level of RGB signals. The RGB signals are finally buffered before being available at the RGB output pins [pin20 (R), pin19 (G), pin18 (R)].

## 4. AUDIO OUTPUT(TDA7263M)

The audio signals output from the audio unit are input to pin1(L) and 5(R) of IC171 and passes through the pre-amplifier circuit and drive circuit, after which it is input to the audio amplifier. The audio amplifier is an SEPP (single-ended, push-pull) OTL type and output to pin8(R) and 10(L) to directly drive the speakers.

## 5. VERTICAL OUTPUT (LA7832/LA7832)

An IC (LA7832/LA7833) is used for the vertical output circuit in this chassis. The vertical drive pulse from pin43 of IC201 is input to pin4 of IC501. This pulse drives IC501, and vertical scanning is performed. In the first half of scanning a deflecting current is output from pin2 and passes through the following path:  
Vcc(B4) → D501 → pin3 → pin2 → DY → C512 → VR501/R509. An electric charge is then stored in C512. In the last half of scanning the current path is C512 → DY → pin2 → pin1 → VR501/R509 → C512. In this way, an amplifying sawtooth waveform current flows directly to DY to perform electron beam deflection. Next, in the first half of the banking period the vertical drive pulse suddenly becomes OFF, and in order to reduce the current flowing to DY, the current path becomes as follows by the inductance of DY:  
DY → pin2 → pin1 → VR501/R509 → C512 → DY. Also, when the charge of DY has dissipated, the current path becomes Vcc24V → pin6 → pin7 → C502 → pin3 → pin2 → DY → C512 → VR501/R509, and when the prescribed current value is reached, the vertical drive pulse becomes ON. This completes one cycle.

---

## 6. HORIZONTAL OUTPUT

A horizontal oscillation signal is output from pin37 of IC201 and switches the drive transistor Q431. This switching signal is current amplified by the drive transformer T431 and drives the output transistor Q432. When Q432 becomes ON, an amplifying current flows directly to DY through C441 → DY → Q432 → GND, and deflection is performed in the last half of the scanning period. Next, when Q432 becomes OFF, the charge that had been stored in DY up to that point releases a resonance current to the resonant capacitors C421/C423 and charges them. The current stored in C421/C423 is then flowed back to DY, and an opposite charge is then stored in DY. This opposite charge then switches the dumper diode in Q432 ON, the resonance state is completed, and an amplifying current is then flowed again directly to DY through the dumper diode. By this means, deflection in the first half of the scanning period is performed, and when Q432 becomes ON at the end of the first half of the scanning period, deflection during the last half is begun, thus completing one cycle.

In the PCC circuit consisting of Q461 and Q462, the parabola signal supplied from the vertical circuit is added at the horizontal output stage and pincushion compensation is performed by varying the DC voltage bias. Further, the ABL voltage is feedback to the base of Q462 to compensate for width variations due to variations in the beam current.

## 7. CPU <System and Teletext Control>

### Pin description

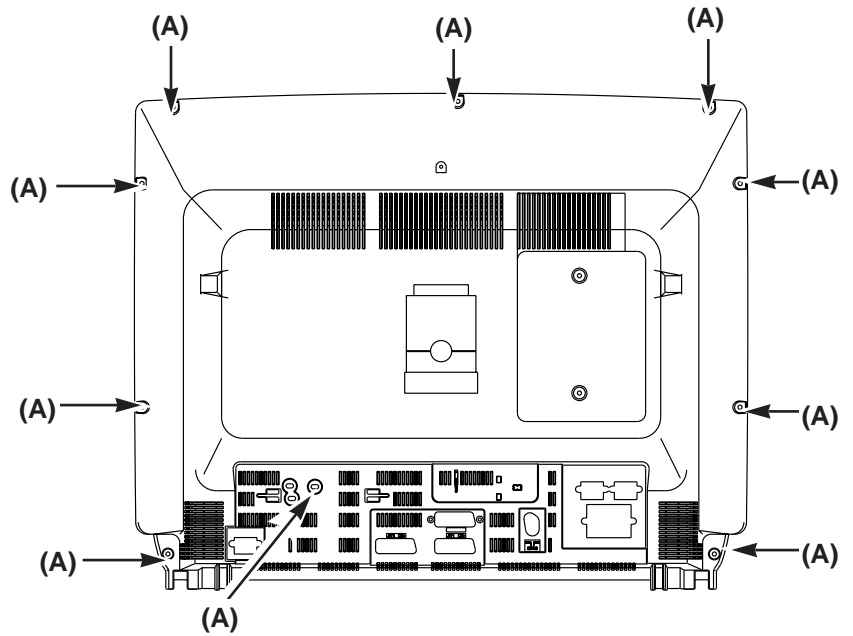
**Pin1:** Tuning voltage output  
**Pin2:** Brightness control output (6-bit DAC)  
**Pin3:** Contrast control output (6-bit DAC)  
**Pin4:** Colour control output (6-bit DAC)  
**Pin5:** Sharpness control output(6-bit DAC)  
**Pin6:** Not used (GND)  
**Pin7:** Not used (GND)  
**Pin8:** Power ON/OFF output (H:ON)  
**Pin9:** AFT signal input  
**Pin10:** Option SW1 & Keyboard scan input (DC)  
**Pin11:** Option SW2  
**Pin12:** 50/60Hz switch input (50Hz: Hi)  
**Pin13:** GND  
**Pin14:** TV/AV switch output (TV: Hi)  
**Pin15:** S-VHS switch output (S-VHS: Hi)  
**Pin16:** Option SW3 (2AV: Hi)  
**Pin17:** Function signal input for SCART1  
**Pin18:** Function signal input for SCART2  
**Pin19:** Power LED drive output1  
**Pin20:** Option SW4 & Power LED drive output2  
**Pin21:** Ignore output  
**Pin22:** GND  
**Pin23:** CVBS input0 (Internal)  
**Pin24:** CVBS input1 (Internal/External)  
**Pin25:** Black

**Pin26:** IREF  
**Pin27:** Odd/Even output  
**Pin28:** GND  
**Pin29:** -  
**Pin30:** V-deflection stop output  
**Pin31:** RGB REF  
**Pin32:** Blue output for OSD  
**Pin33:** Green output for OSD  
**Pin34:** Red output for OSD  
**Pin35:** Blanking output for OSD  
**Pin36:** H-sync. input (Horizontal pulse for OSD)  
**Pin37:** V-sync. input (Vertical pulse for OSD)  
**Pin38~39:** Supply (+5V)  
**Pin40:** OSC GND  
**Pin41:** Oscillator input for CPU  
**Pin42:** Oscillator output for CPU  
**Pin43:** Reset input  
**Pin44:** Supply (+5V)  
**Pin45:** Protect signal input (L:Power circuit defects)  
**Pin46:** Ident. signal input  
**Pin47:** R/C signal input  
**Pin48:** Mute output in no picture  
**Pin49:** I<sup>2</sup>C bus SCL (Serial clock)  
**Pin50:** I<sup>2</sup>C bus SDA (Serial date)  
**Pin51:** Option SW5 & Band select output1  
**Pin52:** Band select output2

# CABINET DISASSEMBLY

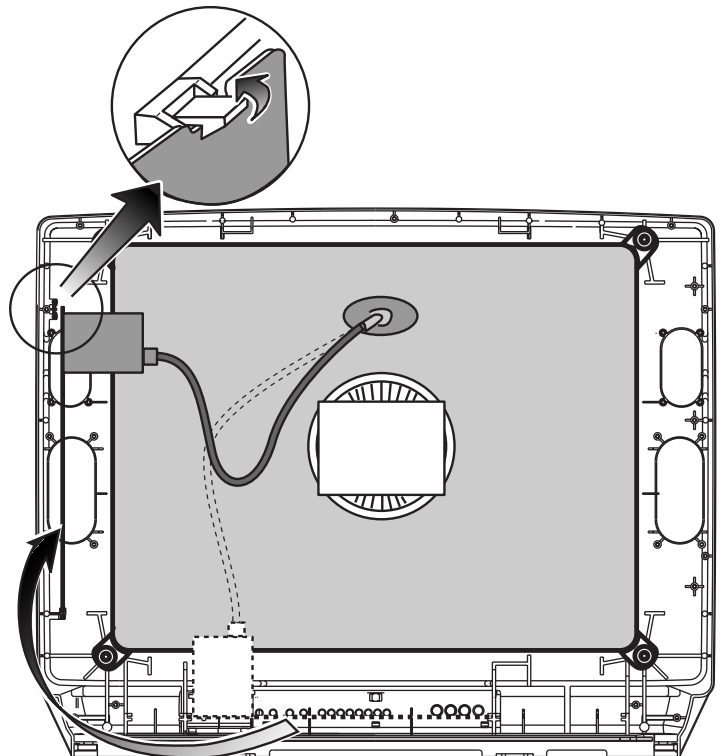
## CABINET BACK DISASSEMBLY

1. Remove 10 screws(A).
2. Pull out the cabinet back.



## PLACING THE CHASSIS TO SERVICE POSITION

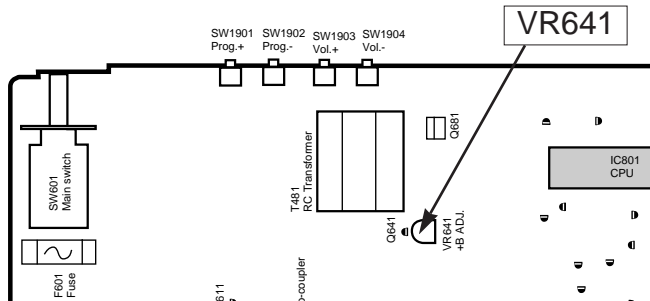
1. Pullout the chassis and put it to the rails on the side cabinet.
2. Fix main board with hook on the top rail.



# SERVICE CONTROL ADJUSTMENT

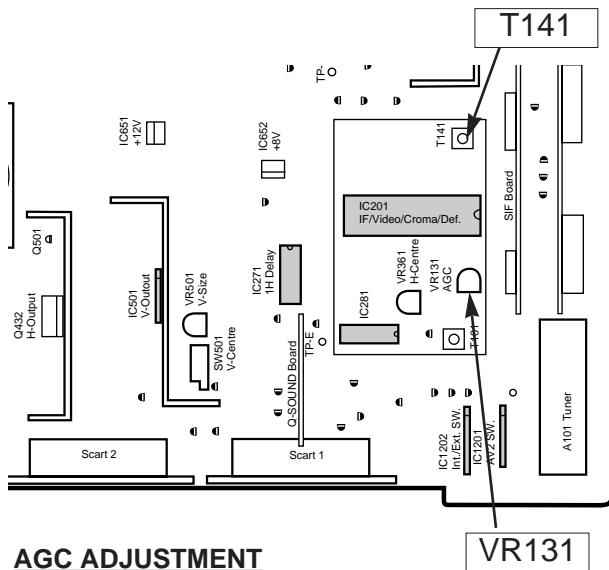
## B1 POWER SUPPLY ADJUSTMENT

1. Set VR641 to be mechanical centre before pressing the main switch.
2. Tune the receiver to PAL circular pattern.
3. Set brightness and contrast controls to normal.
4. Connect digital V-meter to test point "TP-B".
5. By using VR641, adjust voltage to  $150 \pm 0.5$  V.



## AFT ADJUSTMENT

1. Tune the receiver to the clearest station.
2. By using T141, adjust AFT to obtain the best picture.



## AGC ADJUSTMENT

**NOTE: Do not attempt this adjustment with weak signal.**

1. Tune the receiver to the clearest station.
2. Set AGC VR (VR131) in direction which causes snow noise to appear, then in the opposite direction until snow noise just disappears.

## GREY SCALE ADJUSTMENT

### [SCREEN VR ADJUSTMENT]

1. Tune the receiver to the white pattern.
2. Set brightness and contrast controls to normal.
3. Set VR602 and VR612 to be mechanical centre.
4. Turn VR601, VR611 and VR621 fully counter-clockwise.
5. Set mode to one horizontal scanning line, how to set refer to "service mode"

6. Set screen VR for one colour to be just visible.

### [BIAS VR ADJUSTMENT]

7. By using VR601, VR611 or VR621, adjust line to be white.
8. Set screen mode OFF, how to set refer to "service mode"

### [DRIVE VR ADJUSTMENT]

9. By using VR602 and VR612, adjust white balance.

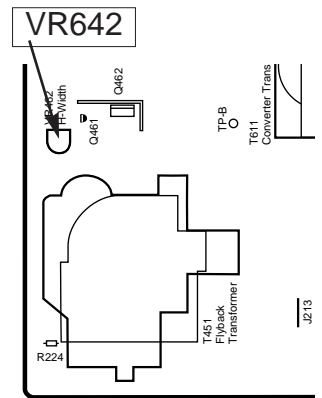
## HIGH VOLTAGE & WIDTH ADJUSTMENT

### [HIGH VOLTAGE ADJUSTMENT]

1. Tune the receiver to circular pattern.
2. Set brightness and contrast controls to maximum.
3. Connect digital V-meter to both terminals of R224, and high voltage meter to CRT anode.
4. Confirm high voltage to be  $26.0 \pm 1$  KV at beam current 1.4, and less than 29.0 KV at 0 beam current.

### [H-WIDTH ADJUSTMENT]

5. Adjust VR462 to obtain proper H- width.
6. Reconfirm high voltage.



### [H-CENTRE ADJUSTMENT]

1. Tune the receiver to circular pattern.
2. Adjust H-centre by using VR361.

### [V-CENTRE ADJUSTMENT]

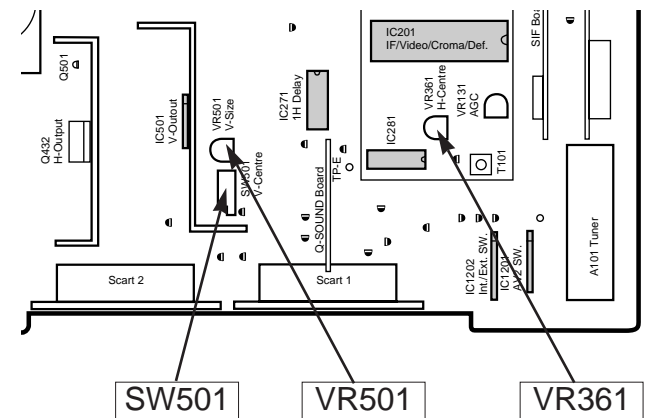
1. Tune the receiver to circular pattern.
2. Adjust V-centre by using SW501.

### [V-SIZE ADJUSTMENT]

1. Tune the receiver to circular pattern.
2. Adjust V-size by using VR501.

## FOCUS ADJUSTMENT

By using FOCUS VR, adjust focus control for good scanning lines.



# CIRCUIT ALIGNMENT

## VIF alignment

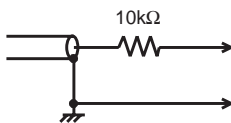
| SETTING   |   | Adjustment   | Waveform |
|---|---|--|----------|
| DC 15.5V<br>AGC voltage (4.3-4.5V)<br>Output probe<br><br>Input probe<br>Marker frequency<br>Sweep ATT<br>0dB=176mVrms/75 | C644 +<br>IC201-pin48<br>IC201-pin45<br>(Side b)<br>IC201-pin7<br>38.9MHz<br>20dB | By using T141, adjust "P" to be maximum amplitude. |          |

## SIF alignment

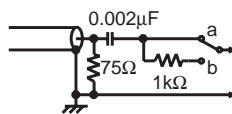
| SETTING  |  | Adjustment   | Waveform |
|--|--|--|----------|
| DC 12V<br>AGC voltage(5V DC)<br>Output probe<br><br>Input probe<br>Sweep ATT<br>Marker Frequency<br>Tool-A | IC3801-pin9<br>IC3801-pin13<br>IC3801-pin5<br>(Side b)<br>IC3801-pin17<br>10dB<br>38.9MHz<br>IC3801-pin6<br>and ground | 1. By using T3801, adjust the VCO oscillation to be "P". |          |



Tool-A

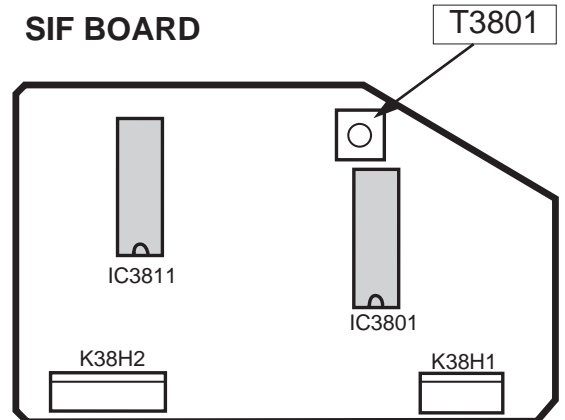


Input probe



Output probe

## SIF BOARD





# INITIALIZATION (Important Notice)

---

When you replace a memory IC (IC802), it is necessary to initialise the IC as following step.

## A. Initialization

Press and hold the ( →•← ) **normalization button** on the remote control handset and press the ( P▲ ) **programme + button** on the TV set.

The IC will be initialised automatically to set the following data.

### User control data

Colour : Centre  
Brightness : Centre  
Contrast : Maximum  
Sharpness : Centre  
Text. Bright : Centre  
Bass : Centre  
Treble : Centre  
Balance : Centre  
Volume : Step 12

## B. Service Mode

1. To enter the service mode, press and hold the ( F□ ) **Function button** on the remote control handset and press the ( P▲ ) **programme + button** on the TV set.

The following OSD appears on the screen.

|                |             |
|----------------|-------------|
| <b>ADJUST</b>  | <b>DATA</b> |
| <b>System</b>  | <b>+000</b> |
| <b>SCREEN</b>  | <b>VOL</b>  |
| <b>CPU MK2</b> | <b>1.0</b>  |

2. Select desired service item by using the ( F□ ) **Function button** on the remote control handset.
3. Change date by using the ( ▲ + ) **Level +** or ( ▲ - ) **button**.
4. To return to TV mode press the ( □ ▽ ) **Recall button** on the remote control handset.

### **Service mode description**

SCREEN: For screen adjustment  
To make one horizontal scanning line.

# SPECIAL FUNCTION

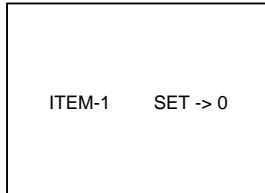
---

This TV set allows you to set up the following special functions.

## ■ Maximum volume setting and prohibition of presetting

### ITEM-1

Sets the current volume as the maximum volume level and prohibition of presetting.



|         |     |
|---------|-----|
| SET → 0 | NO  |
| SET → 1 | YES |




## ■ Start up programme position

### ITEM-2

Presets the programme position when the set is switched on.

|          |                               |
|----------|-------------------------------|
| SET -> 0 | Last programme position start |
| SET -> 1 | Programme position "1" start  |
| SET -> 2 | Programme position "2" start  |
| SET -> 3 | Programme position "3" start  |
| SET -> 4 | Programme position "4" start  |
| SET -> 5 | Programme position "5" start  |
| SET -> 6 | Programme position "6" start  |
| SET -> 7 | Programme position "7" start  |
| SET -> 8 | Programme position "8" start  |
| SET -> 9 | "AV1" start                   |

## SETTING PROCEDURE

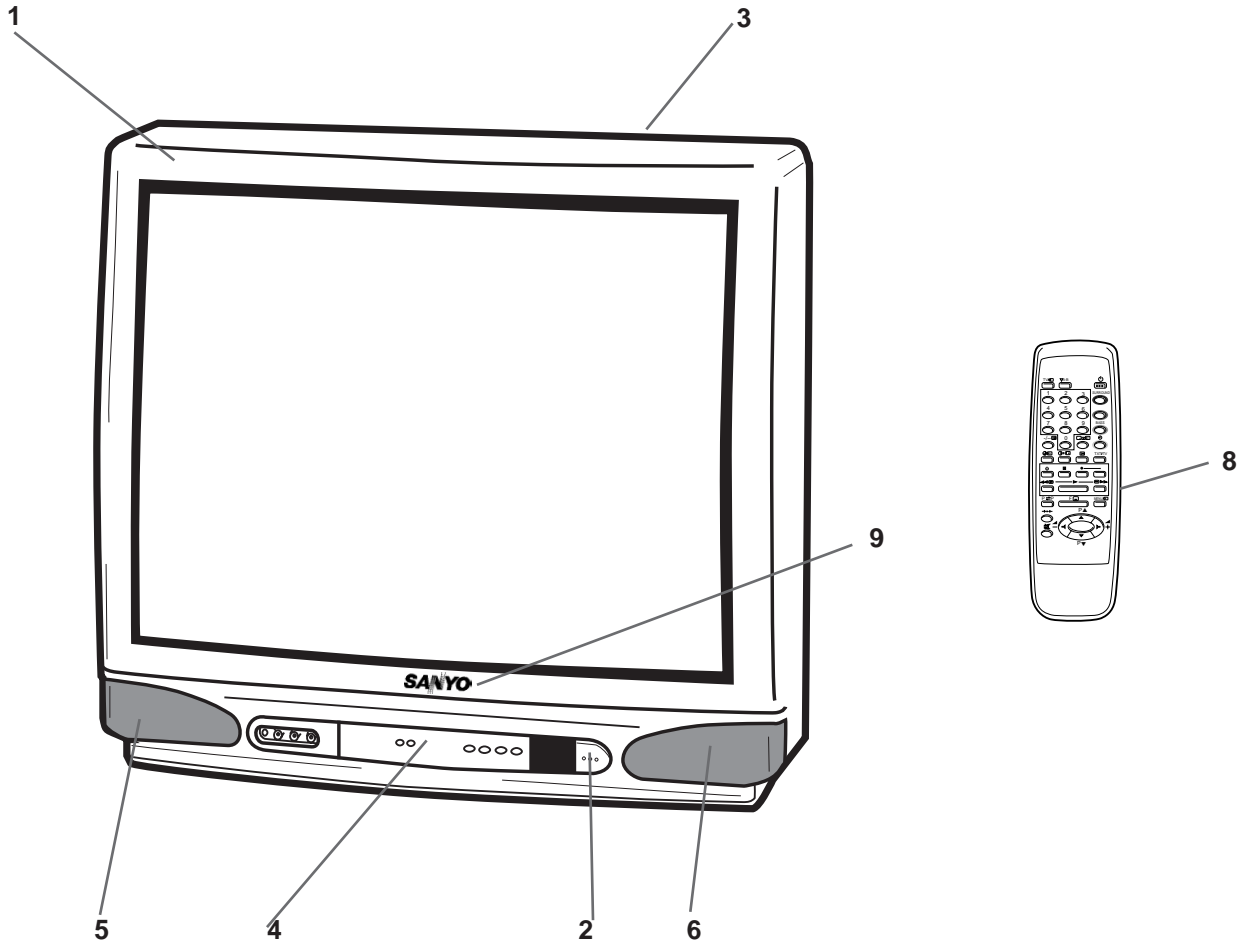
- 1 Press and hold the  button on the **Remote control handset** and then press the **P▲** button on the **TV set**.
- 2 To select the "Item" number, press the **F**  button on the **remote control handset**.
- 3 To select the "Set" number, press the **▲+** or **-▲** button repeatedly.
- 4 To return to the normal TV mode, press the  button.

- ✍ The setting conditions of all items can be confirmed.
- ✍ Special functions are not cancelled if the TV set is switched off or the mains disconnected.

**SERVICE REF. NO. CE28SN3-C-12**

**CABINET PARTS LIST**

Note: Parts order must contain Service Ref. No., Part No., and descriptions.



| Ref. No.             | Part No.      | Description                 | Ref. No. | Part No. | Description |
|----------------------|---------------|-----------------------------|----------|----------|-------------|
| <b>CABINET PARTS</b> |               |                             |          |          |             |
| 1                    | 1KBOCAM0458-D | ASSY, CABINET FR- F2ZH      |          |          |             |
| 2                    | SKTBUM0058AE  | UNSP BTN UNIT- F2ZE- A      |          |          |             |
| 3                    | 610 262 2089  | CABINET BACK- B- E6ZV       |          |          |             |
| 4                    | 610 262 6742  | DEC BOARD- F2ZV             |          |          |             |
| 5                    | SKTGRF1271-D  | ASSY GRILLE SP- R           |          |          |             |
| 6                    | SKTGRF1272-D  | ASSY GRILLE SP- L           |          |          |             |
| 7                    | 645 003 9256  | BADGE, SANYO*46. 2X13. 5L45 |          |          |             |
| <b>ACCESSORIES</b>   |               |                             |          |          |             |
| 8                    | JXMCA         | RC TRANSMITTER              |          |          |             |
|                      | SKP10160      | INST MANUAL - F2Z           |          |          |             |
|                      | SKP10161      | INST MANUAL - F2Z           |          |          |             |
|                      | 645 000 6708  | BATTERY, MANGAN, COMPOSITE  |          |          |             |

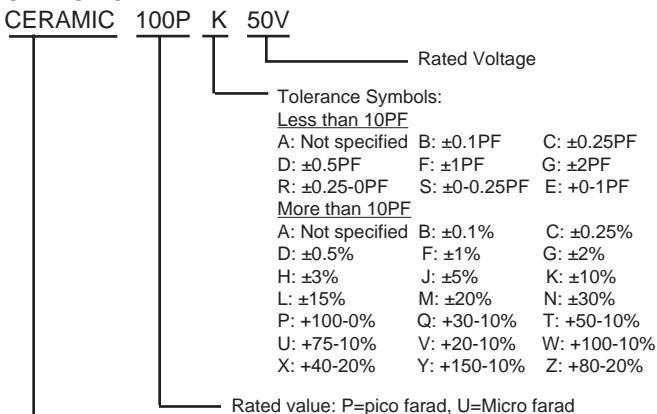
# CHASSIS ELECTRICAL PARTS LIST

Product safety should be considered when a component replacement is made in any area of a receiver. Components indicated by a  $\Delta$  mark in this parts list and the circuit diagram show components whose value have special significance to product safety. It is particularly recommended that only parts specified on the following parts list be used for components replacement pointed out by the mark  $\Delta$ .

Note: Parts order must contain Service Ref. No., Part No., and descriptions.

Read description in the Capacitor and Resistor as follows:

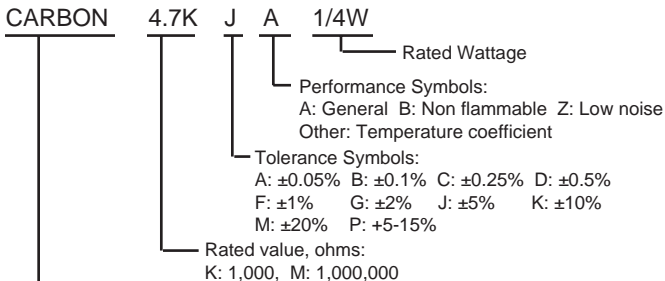
## CAPACITOR



Material:

- CERAMIC..... Ceramic
- MT-PAPER..... Metallized Paper
- POLYESTER..... Polyester
- MT-POLYEST.... Metallized Polyester
- POLYPRO..... Polypropylene
- MT-POLYPRO.... Metallized Polypropylene
- COMPO FILM..... Composite film
- MT-COMPO..... Metallized Composite
- STYRENE..... Styrene
- TA-SOLID..... Tantalum Solid
- AL-SOLID..... Aluminium Solid
- ELECT..... Electrolytic
- NP-ELECT..... Non-polarised Electrolytic
- OS-SOLID..... Aluminium Solid with Organic Semiconductive Electrolytic
- DL-ELECT..... Double Layered Electrolytic

## RESISTOR



Material:

- CARBON..... Carbon
- MT-FILM..... Metal Film
- OXIDE-MT..... Oxide Metal Film
- SOLID..... Composition
- MT-GLAZE..... Metal Glaze
- WIRE WOUND... Wire Wound
- CERAMIC RES.. Ceramic
- FUSIBLE RES.... Fusible

Ref. No. Part No. Description

## Service Ref No.: CE28SN3-C-12

### Chassis construction

#### OUT OF CIRCUIT

|                            |                      |           |
|----------------------------|----------------------|-----------|
| <b>ASSY,PWB,CRT-MK2</b>    | <b>1AA0B10H03500</b> | (Page 12) |
| <b>ASSY,PWB,SIF</b>        | <b>1AA0B10H0300A</b> | (Page 13) |
| <b>ASSY,PWB,AUDIO</b>      | <b>1AA0B10H0300B</b> | (Page 13) |
| <b>ASSY,PWB,MAIN F2ZHY</b> | <b>1AA0B10H028A0</b> | (Page 14) |

#### OUT OF CIRCUIT BOARD

##### PICTURE TUBE

$\Delta$  Q901 414 009 7203 CRT A66EHJ43X38

##### COIL

$\Delta$  L901 645 025 6523 28DEG. COIL OREGA 47320235

##### MISCELLANEOUS

|               |              |                            |
|---------------|--------------|----------------------------|
| SP901         | 610 232 3986 | SPEAKER                    |
| SP902         | 610 232 3986 | SPEAKER                    |
| $\Delta$ W901 | 645 012 7632 | EURO PLUG +2P HOUSE @ 2. 1 |
| W902          | 610 204 6090 | GROUNDING CONNECTOR-D8ZL   |

**ASSY,PWB,CRT-MK2 1AA0B10H03500**

##### TRANSISTOR

|      |              |                      |
|------|--------------|----------------------|
| Q701 | 405 041 6507 | TR 2SC2621-D- RA     |
|      | 405 041 6705 | TR 2SC2621-E- RA     |
|      | 405 066 9903 | TR 2SC2688(1)- K     |
|      | 405 067 0008 | TR 2SC2688(1)- L     |
|      | 405 067 0107 | TR 2SC2688(1)- M     |
| Q711 | 405 041 6507 | TR 2SC2621-D- RA     |
|      | 405 041 6705 | TR 2SC2621-E- RA     |
|      | 405 066 9903 | TR 2SC2688(1)- K     |
|      | 405 067 0008 | TR 2SC2688(1)- L     |
|      | 405 067 0107 | TR 2SC2688(1)- M     |
| Q721 | 405 041 6507 | TR 2SC2621-D- RA     |
|      | 405 041 6705 | TR 2SC2621-E- RA     |
|      | 405 066 9903 | TR 2SC2688(1)- K     |
|      | 405 067 0008 | TR 2SC2688(1)- L     |
|      | 405 067 0107 | TR 2SC2688(1)- M     |
| Q740 | 406 007 1901 | TR JC556A            |
|      | 406 007 1802 | TR JC556B            |
|      | 405 004 4205 | TR 2SA608-E- CTV- NP |
|      | 405 004 4809 | TR 2SA608-F- CTV- NP |
|      | 405 028 7909 | TR 2SA608-G- CTV- NP |
| Q751 | 406 007 1901 | TR JC556A            |
|      | 406 007 1802 | TR JC556B            |

| Ref. No.                 | Part No.     | Description           | Ref. No.                  | Part No.     | Description              |
|--------------------------|--------------|-----------------------|---------------------------|--------------|--------------------------|
|                          | 405 004 4205 | TR 2SA608- E- CTV- NP | <b>ASSY,PWB,SIF</b>       |              | <b>1AA0B10H0300A</b>     |
|                          | 405 004 4809 | TR 2SA608- F- CTV- NP |                           |              |                          |
|                          | 405 028 7909 | TR 2SA608- G- CTV- NP |                           |              |                          |
| <b>CAPACITOR</b>         |              |                       | <b>TRANSISTOR</b>         |              |                          |
| C701                     | 403 074 5712 | CERAMIC 560P K 50V    | Q3811                     | 405 014 4519 | TR 2SC2412KT146/R        |
| C711                     | 403 074 5712 | CERAMIC 560P K 50V    | <b>INTEGRATED CIRCUIT</b> |              |                          |
| C721                     | 403 074 5712 | CERAMIC 560P K 50V    | IC3801                    | 409 310 8407 | IC LA7577N               |
| C731                     | 403 077 2728 | CERAMIC 1000P P 2K    | <b>CAPACITOR</b>          |              |                          |
| C735                     | 403 055 8401 | ELECT 22U M 250V      | C3805                     | 403 023 4414 | CERAMIC 330P J 50V       |
|                          | 403 260 0405 | ELECT 22U M 250V      | C3806                     | 403 069 9510 | CERAMIC CHIP 0.01 Z 50V  |
| C751                     | 403 248 1608 | ELECT 47U M 16V       | C3807                     | 403 069 9510 | CERAMIC CHIP 0.01 Z 50V  |
| <b>RESISTOR</b>          |              |                       | C3808                     | 403 049 4204 | ELECT 10U M 50V          |
| R701                     | 401 026 3925 | CARBON 330 JA 1/6W    | C3809                     | 403 069 9510 | CERAMIC CHIP 0.01 Z 50V  |
| R702                     | 401 026 7022 | CARBON 3K9 JA 1/6W    | C3810                     | 403 051 0607 | ELECT 4.7U M 50V         |
| R703                     | 401 024 7024 | CARBON 1K JA 1/6W     | C3811                     | 403 018 0503 | CERAMIC 22P J 50V        |
| R704                     | 401 065 4604 | OXI DE- MT 12K JA 2W  | C3812                     | 403 048 6308 | ELECT 0.47U M 50V        |
| R705                     | 401 009 6622 | CARBON 3.3K JA 1/2W   | C3813                     | 403 074 6610 | CERAMIC 560P K 50V       |
| R711                     | 401 026 3925 | CARBON 330 JA 1/6W    | C3814                     | 403 069 1712 | CERAMIC 1000P K 50V      |
| R712                     | 401 026 7022 | CARBON 3K9 JA 1/6W    | C3815                     | 403 069 9510 | CERAMIC CHIP 0.01 Z 50V  |
| R713                     | 401 025 7825 | CARBON 2K2 JA 1/6W    | <b>RESISTOR</b>           |              |                          |
| R714                     | 401 065 4604 | OXI DE- MT 12K JA 2W  | R3811                     | 401 038 7512 | MT- GLAZE 56 JA 1/10W    |
| R715                     | 401 009 6622 | CARBON 3.3K JA 1/2W   | R3812                     | 401 037 5618 | MT- GLAZE 10K JA 1/10W   |
| R721                     | 401 026 3925 | CARBON 330 JA 1/6W    | R3815                     | 401 037 5410 | MT- GLAZE 1K JA 1/10W    |
| R722                     | 401 026 7022 | CARBON 3K9 JA 1/6W    | R3816                     | 401 038 3514 | MT- GLAZE 330 JA 1/10W   |
| R723                     | 401 025 4220 | CARBON 1K8 JA 1/6W    | R3817                     | 401 039 0314 | MT- GLAZE 820 JA 1/10W   |
| R724                     | 401 065 4604 | OXI DE- MT 12K JA 2W  | R3818                     | 401 037 6714 | MT- GLAZE 1.2K JA 1/10W  |
| R725                     | 401 009 6622 | CARBON 3.3K JA 1/2W   | <b>TRANSFORMER</b>        |              |                          |
| R727                     | 401 026 9620 | CARBON 470 JA 1/6W    | T3801                     | 610 037 4539 | S COIL                   |
| R741                     | 401 026 9927 | CARBON 4K7 JA 1/6W    | <b>MISCELLANEOUS</b>      |              |                          |
| R742                     | 401 026 4328 | CARBON 3K3 JA 1/6W    | K38H1                     | 645 027 0185 | PLUG, 4P                 |
| R744                     | 401 026 0627 | CARBON 270 JA 1/6W    | K38H2                     | 645 027 0185 | PLUG, 4P                 |
| R752                     | 401 024 7430 | CARBON 10K JA 1/6W    | X3801                     | 421 007 2109 | SAW F TSB5392T           |
| R753                     | 401 024 7430 | CARBON 10K JA 1/6W    | <b>ASSY,PWB,AUDIO</b>     |              |                          |
| <b>VARIABLE RESISTOR</b> |              |                       | <b>1AA0B10H0300B</b>      |              |                          |
| VR701                    | 645 003 5722 | VR, SEMI, 4.7K N      | <b>TRANSISTOR</b>         |              |                          |
| VR702                    | 645 003 5647 | VR, SEMI, 1K N        | Q1252                     | 405 014 4519 | TR 2SC2412KT146/R        |
| VR711                    | 645 003 5722 | VR, SEMI, 4.7K N      | Q1253                     | 405 014 4519 | TR 2SC2412KT146/R        |
| VR712                    | 645 003 5647 | VR, SEMI, 1K N        | Q3452                     | 405 014 4519 | TR 2SC2412KT146/R        |
| VR721                    | 645 003 5722 | VR, SEMI, 4.7K N      | Q3453                     | 405 014 4519 | TR 2SC2412KT146/R        |
| <b>COIL</b>              |              |                       | <b>INTEGRATED CIRCUIT</b> |              |                          |
| L701                     | 645 008 0012 | INDUCTOR, 330U K      | IC1251                    | 409 336 0508 | IC BU4052BC              |
| L711                     | 645 008 0012 | INDUCTOR, 330U K      | IC3451                    | 409 445 1403 | IC TDA9875A/V2           |
| L721                     | 645 008 0012 | INDUCTOR, 330U K      | <b>CAPACITOR</b>          |              |                          |
| <b>DIODE</b>             |              |                       | C1251                     | 403 043 9106 | ELECT 47U M 16V          |
| D701                     | 407 012 4416 | DIODE 1SS133- T- 77   | C3452                     | 403 314 5915 | SMD CAP GRM40X5R474K16   |
| D711                     | 407 012 4416 | DIODE 1SS133- T- 77   | C3453                     | 403 026 2813 | CERAMIC 47P J 50V        |
| D721                     | 407 012 4416 | DIODE 1SS133- T- 77   | C3454                     | 403 068 0419 | CERAMIC 0.1U Z 25V       |
| D751                     | 407 012 4416 | DIODE 1SS133- T- 77   | C3455                     | 401 037 5014 | MT- GLAZE 0.000 ZA 1/10W |
| <b>MISCELLANEOUS</b>     |              |                       | C3458                     | 403 026 2813 | CERAMIC 47P J 50V        |
| K7M                      | 645 008 4058 | TERMINAL PLUG         | C3461                     | 403 049 0008 | ELECT 1U M 50V           |
| K7P                      | 645 008 7288 | HOUSING PLUG 5P       | C3462                     | 401 037 5014 | MT- GLAZE 0.000 ZA 1/10W |
| K7Q                      | 645 008 7264 | HOUSING PLUG 3P       | C3468                     | 403 049 0008 | ELECT 1U M 50V           |
| △ K701                   | 645 031 7699 | CRT SKT. HPS- 014103  | C3469                     | 403 049 0008 | ELECT 1U M 50V           |
|                          |              |                       | C3473                     | 403 279 4312 | CERAMIC 0.33U K 16V      |
|                          |              |                       | C3474                     | 403 279 4312 | CERAMIC 0.33U K 16V      |
|                          |              |                       | C3476                     | 403 314 5915 | SMD CAP GRM40X5R474K16   |

| Ref. No.        | Part No.     | Description              | Ref. No.                                | Part No.     | Description              |
|-----------------|--------------|--------------------------|---|--------------|--------------------------|
| C3477           | 403 039 2104 | ELECT 47U M 6.3V         | <b>MISCELLANEOUS</b>                    |              |                          |
| C3480           | 403 039 2104 | ELECT 47U M 6.3V         | J1251                                   | 401 037 5014 | MT- GLAZE 0.000 ZA 1/10W |
| C3481           | 403 039 2104 | ELECT 47U M 6.3V         | J3459                                   | 401 037 5014 | MT- GLAZE 0.000 ZA 1/10W |
| C3482           | 403 069 9510 | CERAMIC CHIP 0.01 Z 50V  | J3463                                   | 401 037 5014 | MT- GLAZE 0.000 ZA 1/10W |
| C3483           | 403 069 9510 | CERAMIC CHIP 0.01 Z 50V  | J3465                                   | 401 037 5014 | MT- GLAZE 0.000 ZA 1/10W |
| C3484           | 403 039 2104 | ELECT 47U M 6.3V         | J3469                                   | 401 037 5014 | MT- GLAZE 0.000 ZA 1/10W |
| C3485           | 403 069 9510 | CERAMIC CHIP 0.01 Z 50V  | J3474                                   | 401 037 5014 | MT- GLAZE 0.000 ZA 1/10W |
| C3486           | 403 049 0008 | ELECT 1U M 50V           | J3486                                   | 401 037 5014 | MT- GLAZE 0.000 ZA 1/10W |
| C3487           | 403 049 0008 | ELECT 1U M 50V           | J3489                                   | 401 037 5014 | MT- GLAZE 0.000 ZA 1/10W |
| C3490           | 403 009 5718 | CERAMIC 100P J 50V       | K12B                                    | 645 008 7288 | HOUSING PLUG 5P          |
| C3492           | 403 069 5611 | CERAMIC 0.01U K 50V      | K34A                                    | 645 027 0192 | PLUG, 10P                |
| C3493           | 403 069 5611 | CERAMIC 0.01U K 50V      | K34B                                    | 645 027 0192 | PLUG, 10P                |
| C3521           | 403 279 4312 | CERAMIC 0.33U K 16V      | K34C                                    | 645 027 0178 | PLUG, 3P                 |
| C3522           | 403 279 4312 | CERAMIC 0.33U K 16V      | X3451                                   | 645 024 7484 | OSC, CRYSTAL 24.576MHZ   |
| <b>RESISTOR</b> |              |                          | <b>ASSY,PWB,MAIN F2ZH 1AA0B10H028A0</b> |              |                          |
| R1251           | 401 038 9318 | MT- GLAZE 68K JA 1/10W   | <b>TRANSISTOR</b>                       |              |                          |
| R1252           | 401 038 9318 | MT- GLAZE 68K JA 1/10W   | Q001                                    | 406 007 2106 | TR JC546A                |
| R1253           | 401 038 9318 | MT- GLAZE 68K JA 1/10W   | Q1001                                   | 406 007 1901 | TR JC556A                |
| R1254           | 401 038 9318 | MT- GLAZE 68K JA 1/10W   | Q1002                                   | 406 007 2106 | TR JC546A                |
| R1255           | 401 038 9318 | MT- GLAZE 68K JA 1/10W   | Q1003                                   | 406 007 2106 | TR JC546A                |
| R1256           | 401 038 9318 | MT- GLAZE 68K JA 1/10W   | Q1004                                   | 406 007 2106 | TR JC546A                |
| R1257           | 401 038 9318 | MT- GLAZE 68K JA 1/10W   | Q1005                                   | 406 007 2106 | TR JC546A                |
| R1258           | 401 038 9318 | MT- GLAZE 68K JA 1/10W   | Q1041                                   | 406 007 2106 | TR JC546A                |
| R1261           | 401 038 6317 | MT- GLAZE 470 JA 1/10W   | Q1042                                   | 406 007 1901 | TR JC556A                |
| R1262           | 401 038 0711 | MT- GLAZE 2.2K JA 1/10W  | Q1043                                   | 406 007 2106 | TR JC546A                |
| R1263           | 401 038 6317 | MT- GLAZE 470 JA 1/10W   | Q1201                                   | 406 007 2106 | TR JC546A                |
| R1264           | 401 038 0711 | MT- GLAZE 2.2K JA 1/10W  | Q1202                                   | 406 007 2106 | TR JC546A                |
| R3451           | 401 037 5212 | MT- GLAZE 100 JA 1/10W   | Q1203                                   | 406 007 2106 | TR JC546A                |
| R3452           | 401 037 5212 | MT- GLAZE 100 JA 1/10W   | Q121                                    | 406 007 2106 | TR JC546A                |
| R3453           | 401 037 5618 | MT- GLAZE 10K JA 1/10W   | Q151                                    | 406 007 1901 | TR JC556A                |
| R3454           | 401 037 5212 | MT- GLAZE 100 JA 1/10W   | Q152                                    | 406 007 2106 | TR JC546A                |
| R3455           | 401 037 5618 | MT- GLAZE 10K JA 1/10W   | Q153                                    | 406 007 1901 | TR JC556A                |
| R3456           | 401 037 5014 | MT- GLAZE 0.000 ZA 1/10W | Q154                                    | 406 007 1901 | TR JC556A                |
| R3459           | 401 037 5014 | MT- GLAZE 0.000 ZA 1/10W | Q171                                    | 406 007 2106 | TR JC546A                |
| R3462           | 401 037 5014 | MT- GLAZE 0.000 ZA 1/10W | Q2001                                   | 406 007 2106 | TR JC546A                |
| R3464           | 401 037 5212 | MT- GLAZE 100 JA 1/10W   | Q201                                    | 406 007 2106 | TR JC546A                |
| R3465           | 401 037 5618 | MT- GLAZE 10K JA 1/10W   | Q202                                    | 406 007 2106 | TR JC546A                |
| R3466           | 401 037 5410 | MT- GLAZE 1K JA 1/10W    | Q431                                    | 405 018 0616 | TR 2SC3332-S             |
| R3467           | 401 038 2111 | MT- GLAZE 2.7K JA 1/10W  | Q432                                    | 406 015 2501 | ON5111 (BU2708DX) PH.    |
| R3468           | 401 037 5410 | MT- GLAZE 1K JA 1/10W    | Q461                                    | 405 064 7307 | TR 2SB1274-Q-RA          |
| R3469           | 401 038 2111 | MT- GLAZE 2.7K JA 1/10W  | Q461-1                                  | 610 251 5916 | HEAT SINK PCC E7LC       |
| R3471           | 401 038 2012 | MT- GLAZE 270 JA 1/10W   | Q461-2                                  | 411 045 2209 | SCR PAN+SW 3X10          |
| R3472           | 401 037 5014 | MT- GLAZE 0.000 ZA 1/10W | Q461-3                                  | 411 004 4404 | NUT HEX 3                |
| R3473           | 401 038 6317 | MT- GLAZE 470 JA 1/10W   | Q461-4                                  | 610 014 5818 | WASHER                   |
| R3474           | 401 038 0711 | MT- GLAZE 2.2K JA 1/10W  | Q461-5                                  | 610 077 7613 | SILICONE GREASE G-746    |
| R3475           | 401 038 6317 | MT- GLAZE 470 JA 1/10W   | Q462                                    | 406 007 2106 | TR JC546A                |
| R3476           | 401 038 0711 | MT- GLAZE 2.2K JA 1/10W  | Q501                                    | 406 007 2106 | TR JC546A                |
| R3477           | 401 038 5310 | MT- GLAZE 39K JA 1/10W   | Q611                                    | 406 007 1901 | TR JC556A                |
| R3478           | 401 038 5310 | MT- GLAZE 39K JA 1/10W   | Q612                                    | 405 058 0208 | TR 2SC3807-R-CTV-YA      |
| R3479           | 401 037 8015 | MT- GLAZE 15K JA 1/10W   | Q613                                    | 405 095 0407 | TR 2SC4429-L-YB          |
| R3480           | 401 037 8015 | MT- GLAZE 15K JA 1/10W   | Q613-1                                  | 610 251 5893 | POW HEAT SINK E7LC       |
| R3515           | 401 037 5014 | MT- GLAZE 0.000 ZA 1/10W | Q613-2                                  | 411 046 8507 | SCR PAN+SW+W 3X10        |
| R3517           | 401 037 5014 | MT- GLAZE 0.000 ZA 1/10W | Q613-3                                  | 411 004 4404 | NUT HEX 3                |
| R3518           | 401 038 0711 | MT- GLAZE 2.2K JA 1/10W  | Q613-4                                  | 610 077 7613 | SILICONE GREASE G-746    |
| <b>COIL</b>     |              |                          | Q641                                    | 406 007 2106 | TR JC546A                |
| L3450           | 401 037 5014 | MT- GLAZE 0.000 ZA 1/10W | Q681                                    | 405 059 9804 | TR 2SD1913-Q-RA          |
| L3452           | 645 008 2221 | INDUCTOR, 2.2U K         | Q682                                    | 406 007 1901 | TR JC556A                |
| L3456           | 645 008 2221 | INDUCTOR, 2.2U K         | Q801                                    | 405 118 4217 | TR PH2369                |
| L3457           | 645 008 2221 | INDUCTOR, 2.2U K         | Q835                                    | 406 007 2106 | TR JC546A                |
| L3459           | 401 037 5014 | MT- GLAZE 0.000 ZA 1/10W | Q861                                    | 406 007 1901 | TR JC556A                |
|                 |              |                          | Q871                                    | 406 007 2106 | TR JC546A                |

| Ref. No.                  | Part No.     | Description               | Ref. No. | Part No.     | Description             |
|---------------------------|--------------|---------------------------|----------|--------------|-------------------------|
| Q872                      | 406 007 2106 | TR JC546A                 | C1028    | 403 041 9405 | ELECT 10U M 16V         |
| Q873                      | 406 007 2106 | TR JC546A                 | C1029    | 403 049 4204 | ELECT 10U M 50V         |
| Q874                      | 406 007 2106 | TR JC546A                 | C1031    | 403 033 4510 | CERAMIC 82P J 50V       |
| <b>INTEGRATED CIRCUIT</b> |              |                           | C104B    | 403 043 9106 | ELECT 47U M 16V         |
| IC001                     | 409 301 4906 | IC TDA7263M               | C1041    | 403 049 4204 | ELECT 10U M 50V         |
| IC001-1                   | 610 251 4186 | AUDIO HEATSINK ASSY E7PC  | C106     | 403 049 0008 | ELECT 1U M 50V          |
| IC1201                    | 409 018 7603 | IC LA7016                 | C106A    | 403 069 9510 | CERAMIC CHIP 0.01 Z 50V |
| IC1202                    | 409 120 3401 | IC LA7221                 | C107A    | 403 069 1712 | CERAMIC 1000P K 50V     |
| IC201                     | 409 380 8703 | IC TDA8361/N5             | C107B    | 403 069 9510 | CERAMIC CHIP 0.01 Z 50V |
| IC271                     | 409 404 0201 | IC U3665M                 | C108     | 403 027 1211 | CERAMIC 5P J 50V        |
| IC501                     | 409 192 5709 | IC LA7833                 | C109     | 403 027 1211 | CERAMIC 5P J 50V        |
| IC501-1                   | 610 251 5909 | V HEAT SINK E7LC          | C110     | 403 033 4510 | CERAMIC 82P J 50V       |
| IC651                     | 409 365 2900 | IC BA178MI2T              | C1101    | 403 049 4204 | ELECT 10U M 50V         |
| IC652                     | 409 365 2801 | IC BA178M08T              | C1103    | 403 069 1712 | CERAMIC 1000P K 50V     |
| IC653                     | 409 241 5407 | IC BA178M05T              | C1104    | 403 049 4204 | ELECT 10U M 50V         |
| IC654                     | 409 367 2809 | IC BA178M09T              | C1106    | 403 069 1712 | CERAMIC 1000P K 50V     |
| IC801                     | 410 317 2909 | IC SAA5296ZP/092          | C1107    | 403 049 4204 | ELECT 10U M 50V         |
| IC802                     | 409 333 3700 | IC 24LC02B/P              | C1108    | 403 033 4510 | CERAMIC 82P J 50V       |
| IC810                     | 409 019 6209 | IC LA7910                 | C1109    | 403 008 7416 | CERAMIC 10P D 50V       |
| <b>CAPACITOR</b>          |              |                           | C114     | 401 037 5014 | MT-GLAZE 0.000 ZA 1/10W |
| C001A                     | 403 068 0419 | CERAMIC 0.1U Z 25V        | C117     | 401 037 5014 | MT-GLAZE 0.000 ZA 1/10W |
| C002                      | 403 070 9813 | CHIP CERAMIC 0.015U K 50V | C1200    | 403 069 9510 | CERAMIC CHIP 0.01 Z 50V |
| C003A                     | 403 068 0419 | CERAMIC 0.1U Z 25V        | C1201    | 403 049 4204 | ELECT 10U M 50V         |
| C004                      | 403 070 9813 | CHIP CERAMIC 0.015U K 50V | C1202    | 403 049 4204 | ELECT 10U M 50V         |
| C005                      | 403 046 3507 | ELECT 33U M 25V           | C1203    | 403 069 8305 | CERAMIC 0.01U Z 50V     |
| C006                      | 403 046 3507 | ELECT 33U M 25V           | C121     | 403 068 0419 | CERAMIC 0.1U Z 25V      |
| C007                      | 403 237 7941 | MT-COMPO 0.22U J 50V      | C131     | 401 037 5014 | MT-GLAZE 0.000 ZA 1/10W |
| C008                      | 403 237 7941 | MT-COMPO 0.22U J 50V      | C132     | 403 069 1712 | CERAMIC 1000P K 50V     |
| C009                      | 403 237 7941 | MT-COMPO 0.22U J 50V      | C133     | 403 069 9510 | CERAMIC CHIP 0.01 Z 50V |
| C010                      | 403 237 7941 | MT-COMPO 0.22U J 50V      | C134     | 403 049 9803 | ELECT 2.2U M 50V        |
| C011                      | 403 045 1504 | ELECT 1000U M 25V         | C135     | 403 068 0419 | CERAMIC 0.1U Z 25V      |
| C012                      | 403 045 1504 | ELECT 1000U M 25V         | C136     | 403 194 4609 | ELECT 470U M 16V        |
| C013                      | 403 069 9510 | CERAMIC CHIP 0.01 Z 50V   | C137     | 403 068 0419 | CERAMIC 0.1U Z 25V      |
| C014                      | 403 069 9510 | CERAMIC CHIP 0.01 Z 50V   | C138     | 403 069 9510 | CERAMIC CHIP 0.01 Z 50V |
| C015                      | 403 044 9501 | ELECT 100U M 25V          | C141     | 403 028 4419 | CERAMIC 56P J 50V       |
| C016                      | 403 085 4008 | NP-ELECT 10U M 16V        | C142     | 403 068 0419 | CERAMIC 0.1U Z 25V      |
| C017                      | 403 085 4008 | NP-ELECT 10U M 16V        | C143     | 403 027 1211 | CERAMIC 5P J 50V        |
| C020                      | 403 069 0507 | CERAMIC 1000P K 50V       | C146     | 403 010 8507 | CERAMIC 12P J 50V       |
| C021                      | 403 052 8503 | ELECT 1000U M 35V         | C151     | 403 024 2112 | CERAMIC 39P J 50V       |
| C023                      | 403 069 9510 | CERAMIC CHIP 0.01 Z 50V   | C162     | 403 068 2512 | CERAMIC 0.22U Z 25V     |
| C024                      | 403 069 9510 | CERAMIC CHIP 0.01 Z 50V   | C171     | 403 237 8057 | MT-COMPO 0.1U J 50V     |
| C100                      | 403 248 1618 | ELECT 47U M 16V           | C1901    | 403 069 1712 | CERAMIC 1000P K 50V     |
| C1001                     | 403 069 1712 | CERAMIC 1000P K 50V       | C200     | 403 068 0419 | CERAMIC 0.1U Z 25V      |
| C1002                     | 403 049 4204 | ELECT 10U M 50V           | C2001    | 403 068 0419 | CERAMIC 0.1U Z 25V      |
| C1003                     | 403 009 5718 | CERAMIC 100P J 50V        | C2002    | 403 068 0419 | CERAMIC 0.1U Z 25V      |
| C1004                     | 403 130 3119 | CERAMIC 0.047U K 50V      | C2003    | 403 068 0419 | CERAMIC 0.1U Z 25V      |
| C1005                     | 403 069 1712 | CERAMIC 1000P K 50V       | C201     | 403 014 3409 | CERAMIC 18P J 50V       |
| C1006                     | 403 049 4204 | ELECT 10U M 50V           | C202     | 403 237 8057 | MT-COMPO 0.1U J 50V     |
| C1007                     | 403 009 5718 | CERAMIC 100P J 50V        | C203     | 403 073 9117 | CERAMIC 4700P K 50V     |
| C1008                     | 403 130 3119 | CERAMIC 0.047U K 50V      | C204     | 403 068 0419 | CERAMIC 0.1U Z 25V      |
| C1009                     | 403 049 4204 | ELECT 10U M 50V           | C205     | 403 068 0419 | CERAMIC 0.1U Z 25V      |
| C101                      | 403 194 4609 | ELECT 470U M 16V          | C206     | 403 068 0419 | CERAMIC 0.1U Z 25V      |
| C102                      | 403 043 9106 | ELECT 47U M 16V           | C207     | 403 068 0419 | CERAMIC 0.1U Z 25V      |
| C103A                     | 403 069 1712 | CERAMIC 1000P K 50V       | C208     | 403 068 0419 | CERAMIC 0.1U Z 25V      |
| C1021                     | 403 069 1712 | CERAMIC 1000P K 50V       | C209     | 403 069 1712 | CERAMIC 1000P K 50V     |
| C1022                     | 403 049 4204 | ELECT 10U M 50V           | C212     | 403 049 9803 | ELECT 2.2U M 50V        |
| C1023                     | 403 009 5718 | CERAMIC 100P J 50V        | C215     | 403 067 7895 | MT-COMPO 0.47 J 50V     |
| C1024                     | 403 041 9405 | ELECT 10U M 16V           | C222     | 404 045 6605 | NP-ELECT 2.2U M 50V     |
| C1025                     | 403 069 1712 | CERAMIC 1000P K 50V       | C226     | 403 138 1602 | ELECT 1U M 100V         |
| C1026                     | 403 049 4204 | ELECT 10U M 50V           | C231     | 403 068 0419 | CERAMIC 0.1U Z 25V      |
| C1027                     | 403 009 5718 | CERAMIC 100P J 50V        | C232     | 403 033 4510 | CERAMIC 82P J 50V       |
|                           |              |                           | C233     | 403 068 0419 | CERAMIC 0.1U Z 25V      |
|                           |              |                           | C234     | 403 033 4510 | CERAMIC 82P J 50V       |

| Ref. No. | Part No.     | Description              | Ref. No.        | Part No.     | Description              |
|----------|--------------|--------------------------|-----------------|--------------|--------------------------|
| C235     | 403 008 7416 | CERAMI C 10P D 50V       | C644            | 403 148 0701 | ELECT 2200U M 25V        |
| C271     | 403 069 1712 | CERAMI C 1000P K 50V     | C645            | 403 158 1309 | ELECT 2200U M 35V        |
| C272     | 403 069 1712 | CERAMI C 1000P K 50V     | C651            | 403 148 0305 | ELECT 470U M 16V         |
| C273     | 403 069 9510 | CERAMI C CHIP 0.01 Z 50V | C652            | 403 069 9510 | CERAMI C CHIP 0.01 Z 50V |
| C274     | 403 049 4204 | ELECT 10U M 50V          | C653            | 403 043 9106 | ELECT 47U M 16V          |
| C351     | 403 237 8057 | MT-COMPO 0.1U J 50V      | C655            | 403 126 4400 | ELECT 100U M 10V         |
| C352     | 403 179 1015 | POLYESTER 0.047U J 50V   | C661            | 403 051 0607 | ELECT 4.7U M 50V         |
| C353     | 403 073 9117 | CERAMI C 4700P K 50V     | C681            | 403 190 4702 | ELECT 1000U M 25V        |
| C354     | 403 049 0008 | ELECT 1U M 50V           | C682            | 403 069 9510 | CERAMI C CHIP 0.01 Z 50V |
| C361     | 403 072 5615 | CERAMI C 2700P K 50V     | C683            | 403 147 9606 | ELECT 1000U M 10V        |
| C362     | 403 069 9510 | CERAMI C CHIP 0.01 Z 50V | C684            | 403 049 9803 | ELECT 2.2U M 50V         |
| C363     | 403 042 2405 | ELECT 100U M 16V         | C802            | 403 237 8057 | MT-COMPO 0.1U J 50V      |
| △ C421   | 404 046 8806 | MT-POLYPRO 6200P J 1.5K  | C812            | 403 049 0008 | ELECT 1U M 50V           |
| C422     | 403 299 3210 | POLYPRO 0.027U J 400V    | C814            | 403 049 0008 | ELECT 1U M 50V           |
| △ C423   | 404 040 8109 | MT-POLYPRO 5600P J 1.5K  | C816            | 403 051 0607 | ELECT 4.7U M 50V         |
| C424     | 403 299 3012 | POLYPRO 0.015U J 400V    | C818            | 403 051 0607 | ELECT 4.7U M 50V         |
| C430     | 403 075 9709 | CERAMI C 1800P K 500V    | C841            | 403 069 9510 | CERAMI C CHIP 0.01 Z 50V |
| C431     | 403 068 5612 | CERAMI C 0.056U Z 25V    | C861            | 403 179 0810 | POLYESTER 0.0056U J 50V  |
| C432     | 403 075 7101 | CERAMI C 1000P K 500V    | C871            | 403 068 0419 | CERAMI C 0.1U Z 25V      |
| C433     | 403 076 3102 | CERAMI C 3900P K 500V    | C872            | 403 043 9106 | ELECT 47U M 16V          |
| C434     | 403 229 1207 | ELECT 47U M 35V          | C873            | 403 018 0503 | CERAMI C 22P J 50V       |
| C437     | 403 066 6106 | MT-POLYEST 0.47U J 250V  | C874            | 403 018 0503 | CERAMI C 22P J 50V       |
| C438     | 403 178 9319 | POLYESTER 0.01U J 50V    | C875            | 403 068 0419 | CERAMI C 0.1U Z 25V      |
| △ C441   | 403 309 2100 | POLYPRO 0.3U J 400V      | C878            | 403 073 9117 | CERAMI C 4700P K 50V     |
| C445     | 403 049 4204 | ELECT 10U M 50V          | C879            | 403 068 0419 | CERAMI C 0.1U Z 25V      |
| C462     | 403 049 0008 | ELECT 1U M 50V           | C881            | 403 069 9510 | CERAMI C CHIP 0.01 Z 50V |
| C463     | 403 237 8057 | MT-COMPO 0.1U J 50V      | C882            | 403 049 4204 | ELECT 10U M 50V          |
| C464     | 403 255 8934 | MT-COMPO 0.39U J 50V     | C883            | 403 018 0503 | CERAMI C 22P J 50V       |
| C465     | 403 066 0104 | MT-POLYEST 2.2U K 100V   | C884            | 403 018 0503 | CERAMI C 22P J 50V       |
| C467     | 403 040 3701 | ELECT 220U M 10V         | C892            | 403 069 9510 | CERAMI C CHIP 0.01 Z 50V |
| C468     | 403 045 5809 | ELECT 22U M 25V          |                 |              |                          |
| C470     | 403 069 8305 | CERAMI C 0.01U Z 50V     |                 |              |                          |
| C481     | 403 076 1405 | CERAMI C 2700P K 500V    | <b>RESISTOR</b> |              |                          |
| C482     | 403 159 7409 | MT-POLYEST 0.1U K 250V   | R001            | 401 037 5410 | MT-GLAZE 1K JA 1/10W     |
| C501     | 403 054 1502 | ELECT 470U M 35V         | R002            | 401 037 9210 | MT-GLAZE 1.8K JA 1/10W   |
| C502     | 403 217 1103 | ELECT 220U M 35V         | R003            | 401 037 5410 | MT-GLAZE 1K JA 1/10W     |
| C503     | 403 024 2112 | CERAMI C 39P J 50V       | R002            | 401 037 9210 | MT-GLAZE 1.8K JA 1/10W   |
| C504     | 403 069 9510 | CERAMI C CHIP 0.01 Z 50V | R005            | 401 019 9640 | CARBON 47 JA 1/4W        |
| C505     | 403 075 7101 | CERAMI C 1000P K 500V    | R006            | 401 014 4145 | CARBON 1K5 JA 1/4W       |
| C506     | 403 183 7901 | MT-POLYEST 0.1U K 100V   | R007            | 401 019 9640 | CARBON 47 JA 1/4W        |
| C511     | 403 183 7901 | MT-POLYEST 0.1U K 100V   | R008            | 401 014 4145 | CARBON 1K5 JA 1/4W       |
| C512     | 403 148 0701 | ELECT 2200U M 25V        | R009            | 401 010 1514 | CARBON 4.7 JA 1/2W       |
| C513     | 403 049 4204 | ELECT 10U M 50V          | R010            | 401 010 1514 | CARBON 4.7 JA 1/2W       |
| C514     | 403 049 4204 | ELECT 10U M 50V          | R011            | 401 007 7641 | CARBON 150 JA 1/2W       |
| C600     | 403 076 4000 | CERAMI C 4700P K 500V    | R012            | 401 007 7641 | CARBON 150 JA 1/2W       |
| △ C601   | 404 060 7205 | MT-POLYEST 0.1U M 250V   | R013            | 401 037 6714 | MT-GLAZE 1.2K JA 1/10W   |
| △ C602   | 404 060 7205 | MT-POLYEST 0.1U M 250V   | R014            | 401 016 2644 | CARBON 220 JA 1/4W       |
| C603     | 403 076 7130 | CERAMI C 1000P M 1K      | R015            | 401 037 5410 | MT-GLAZE 1K JA 1/10W     |
| C604     | 403 076 7130 | CERAMI C 1000P M 1K      | R016            | 401 038 6515 | MT-GLAZE 47K JA 1/10W    |
| C605     | 403 076 7130 | CERAMI C 1000P M 1K      | R017            | 401 037 5618 | MT-GLAZE 10K JA 1/10W    |
| C606     | 403 076 7130 | CERAMI C 1000P M 1K      | R100            | 401 037 5014 | MT-GLAZE 0.000 ZA 1/10W  |
| C607     | 404 047 1608 | ELECT 270U M 385V        | R1001           | 401 038 7611 | MT-GLAZE 560 JA 1/10W    |
| C613     | 403 179 1213 | POLYESTER 4700P J 50V    | R1002           | 401 038 0711 | MT-GLAZE 2.2K JA 1/10W   |
| C614     | 403 237 8057 | MT-COMPO 0.1U J 50V      | R1003           | 401 038 7611 | MT-GLAZE 560 JA 1/10W    |
| C615     | 403 179 3217 | POLYESTER 0.015U J 50V   | R1004           | 401 038 0711 | MT-GLAZE 2.2K JA 1/10W   |
| C616     | 403 246 8708 | CERAMI C 1000P K 2K      | R1005           | 401 027 6628 | CARBON 75 JA 1/6W        |
| C617     | 403 179 2418 | POLYESTER 0.022U K 50V   | R1006           | 401 038 5310 | MT-GLAZE 39K JA 1/10W    |
| △ C631   | 404 060 6505 | CERAMI C 2200P M 400V    | R1007           | 401 038 3712 | MT-GLAZE 33K JA 1/10W    |
| △ C632   | 404 044 2806 | CERAMI C 470P K 400V     | R1008           | 401 027 6628 | CARBON 75 JA 1/6W        |
| C640     | 403 069 8305 | CERAMI C 0.01U Z 50V     | R1009           | 401 027 6628 | CARBON 75 JA 1/6W        |
| C641     | 403 165 9335 | CERAMI C 680P K 1K       | R101            | 401 038 6218 | MT-GLAZE 47 JA 1/10W     |
| C642     | 404 055 9801 | ELECT 220U M 200V        | R1010           | 401 027 6628 | CARBON 75 JA 1/6W        |
| C643     | 403 148 2002 | ELECT 470U M 35V         | R1011           | 401 037 5212 | MT-GLAZE 100 JA 1/10W    |
|          |              |                          | R1012           | 401 027 6628 | CARBON 75 JA 1/6W        |



| Ref. No. | Part No.     | Description               | Ref. No. | Part No.     | Description               |
|----------|--------------|---------------------------|----------|--------------|---------------------------|
| R1013    | 401 012 4543 | CARBON 100 JA 1/4W        | R155     | 401 037 5410 | MT- GLAZE 1K JA 1/10W     |
| R1014    | 401 027 6628 | CARBON 75 JA 1/6W         | R156     | 401 037 5410 | MT- GLAZE 1K JA 1/10W     |
| R1015    | 401 038 6416 | MT- GLAZE 4. 7K JA 1/10W  | R157     | 401 039 0918 | MT- GLAZE 910 JA 1/10W    |
| R1016    | 401 019 1040 | CARBON 390 JA 1/4W        | R158     | 401 037 5410 | MT- GLAZE 1K JA 1/10W     |
| R1017    | 401 024 7430 | CARBON 10K JA 1/6W        | R159     | 401 022 1935 | CARBON 680 JA 1/4W        |
| R1018    | 401 038 3514 | MT- GLAZE 330 JA 1/10W    | R163     | 401 038 6515 | MT- GLAZE 47K JA 1/10W    |
| R1021    | 401 038 7611 | MT- GLAZE 560 JA 1/10W    | R171     | 401 038 6317 | MT- GLAZE 470 JA 1/10W    |
| R1022    | 401 038 0711 | MT- GLAZE 2. 2K JA 1/10W  | R172     | 401 016 2644 | CARBON 220 JA 1/4W        |
| R1023    | 401 038 7611 | MT- GLAZE 560 JA 1/10W    | R173     | 401 025 7429 | CARBON 220 JA 1/6W        |
| R1024    | 401 038 0711 | MT- GLAZE 2. 2K JA 1/10W  | R1901    | 401 037 8015 | MT- GLAZE 15K JA 1/10W    |
| R1025    | 401 038 5310 | MT- GLAZE 39K JA 1/10W    | R1901A   | 401 037 5014 | MT- GLAZE 0. 000 ZA 1/10W |
| R1026    | 401 038 3712 | MT- GLAZE 33K JA 1/10W    | R1902    | 401 039 0413 | MT- GLAZE 8. 2K JA 1/10W  |
| R1027    | 401 027 6628 | CARBON 75 JA 1/6W         | R1902A   | 401 037 5014 | MT- GLAZE 0. 000 ZA 1/10W |
| R1028    | 401 027 6628 | CARBON 75 JA 1/6W         | R1903    | 401 038 6416 | MT- GLAZE 4. 7K JA 1/10W  |
| R1029    | 401 017 0847 | CARBON 270 JA 1/4W        | R1903A   | 401 037 5014 | MT- GLAZE 0. 000 ZA 1/10W |
| R1031    | 401 038 0612 | MT- GLAZE 220 JA 1/10W    | R1904    | 401 038 2111 | MT- GLAZE 2. 7K JA 1/10W  |
| R1032    | 401 038 0612 | MT- GLAZE 220 JA 1/10W    | R1905    | 401 038 0711 | MT- GLAZE 2. 2K JA 1/10W  |
| R1033    | 401 038 0612 | MT- GLAZE 220 JA 1/10W    | R1906    | 401 037 5014 | MT- GLAZE 0. 000 ZA 1/10W |
| R1041    | 401 038 2210 | MT- GLAZE 27K JA 1/10W    | R1907    | 401 037 5618 | MT- GLAZE 10K JA 1/10W    |
| R1042    | 401 037 5618 | MT- GLAZE 10K JA 1/10W    | R1908    | 401 038 3514 | MT- GLAZE 330 JA 1/10W    |
| R1043    | 401 039 0314 | MT- GLAZE 820 JA 1/10W    | R1909    | 401 037 7919 | MT- GLAZE 1. 5K JA 1/10W  |
| R1044    | 401 039 0314 | MT- GLAZE 820 JA 1/10W    | R1911    | 401 038 6317 | MT- GLAZE 470 JA 1/10W    |
| R1045    | 401 037 5410 | MT- GLAZE 1K JA 1/10W     | R1921    | 401 037 6615 | MT- GLAZE 120 JA 1/10W    |
| R1046    | 401 038 0711 | MT- GLAZE 2. 2K JA 1/10W  | R1922    | 401 038 5013 | MT- GLAZE 390 JA 1/10W    |
| R1047    | 401 037 6714 | MT- GLAZE 1. 2K JA 1/10W  | R1924    | 401 022 3147 | CARBON 6K8 JA 1/4W        |
| R1051    | 401 037 8114 | MT- GLAZE 150K JA 1/10W   | R2001    | 401 038 2210 | MT- GLAZE 27K JA 1/10W    |
| R1052    | 401 037 5717 | MT- GLAZE 100K JA 1/10W   | R2002    | 401 037 5618 | MT- GLAZE 10K JA 1/10W    |
| R1053    | 401 037 6714 | MT- GLAZE 1. 2K JA 1/10W  | R2004    | 401 037 7810 | MT- GLAZE 150 JA 1/10W    |
| R1054    | 401 037 8114 | MT- GLAZE 150K JA 1/10W   | R2005    | 401 019 1941 | CARBON 3K9 JA 1/4W        |
| R1055    | 401 037 5717 | MT- GLAZE 100K JA 1/10W   | R201     | 401 039 0413 | MT- GLAZE 8. 2K JA 1/10W  |
| R1056    | 401 037 6714 | MT- GLAZE 1. 2K JA 1/10W  | R202     | 401 037 5717 | MT- GLAZE 100K JA 1/10W   |
| R108     | 401 037 5014 | MT- GLAZE 0. 000 ZA 1/10W | R203     | 401 024 6720 | CARBON 100 JA 1/6W        |
| R110     | 401 037 5014 | MT- GLAZE 0. 000 ZA 1/10W | R204     | 401 024 6720 | CARBON 100 JA 1/6W        |
| R1101    | 401 027 6628 | CARBON 75 JA 1/6W         | R205     | 401 024 6720 | CARBON 100 JA 1/6W        |
| R1102    | 401 038 2012 | MT- GLAZE 270 JA 1/10W    | R206     | 401 037 5212 | MT- GLAZE 100 JA 1/10W    |
| R1103    | 401 038 0711 | MT- GLAZE 2. 2K JA 1/10W  | R207     | 401 037 5212 | MT- GLAZE 100 JA 1/10W    |
| R1104    | 401 038 0711 | MT- GLAZE 2. 2K JA 1/10W  | R208     | 401 037 5212 | MT- GLAZE 100 JA 1/10W    |
| R1105    | 401 037 5717 | MT- GLAZE 100K JA 1/10W   | R212     | 401 017 1844 | CARBON 2K7 JA 1/4W        |
| R1106    | 401 037 5717 | MT- GLAZE 100K JA 1/10W   | R213     | 401 038 7710 | MT- GLAZE 5. 6K JA 1/10W  |
| R1111    | 401 037 5618 | MT- GLAZE 10K JA 1/10W    | R214     | 401 037 5212 | MT- GLAZE 100 JA 1/10W    |
| R1200    | 401 022 1935 | CARBON 680 JA 1/4W        | R215     | 401 038 3712 | MT- GLAZE 33K JA 1/10W    |
| R1201    | 401 038 6515 | MT- GLAZE 47K JA 1/10W    | R216     | 401 016 4836 | CARBON 22K JA 1/4W        |
| R1202    | 401 038 6515 | MT- GLAZE 47K JA 1/10W    | R217     | 401 016 4836 | CARBON 22K JA 1/4W        |
| R1203    | 401 037 5618 | MT- GLAZE 10K JA 1/10W    | R218     | 401 038 7819 | MT- GLAZE 56K JA 1/10W    |
| R1204    | 401 038 2210 | MT- GLAZE 27K JA 1/10W    | R223     | 401 014 6149 | CARBON 150K JA 1/4W       |
| R1205    | 401 038 2210 | MT- GLAZE 27K JA 1/10W    | R224     | 401 024 7024 | CARBON 1K JA 1/6W         |
| R1208    | 401 038 0810 | MT- GLAZE 22K JA 1/10W    | R226     | 401 026 7428 | CARBON 39K JA 1/6W        |
| R1209    | 401 012 7049 | CARBON 10K JA 1/4W        | R227     | 401 012 7049 | CARBON 10K JA 1/4W        |
| R121     | 401 020 2944 | CARBON 47K JA 1/4W        | R231     | 401 038 2012 | MT- GLAZE 270 JA 1/10W    |
| R131     | 401 038 0919 | MT- GLAZE 220K JA 1/10W   | R232     | 401 038 2012 | MT- GLAZE 270 JA 1/10W    |
| R132     | 401 038 0919 | MT- GLAZE 220K JA 1/10W   | R271     | 401 024 6720 | CARBON 100 JA 1/6W        |
| R133     | 401 037 9111 | MT- GLAZE 180 JA 1/10W    | R272     | 401 024 9028 | CARBON 120 JA 1/6W        |
| R134     | 401 039 0413 | MT- GLAZE 8. 2K JA 1/10W  | R351     | 401 037 5212 | MT- GLAZE 100 JA 1/10W    |
| R135     | 401 038 0810 | MT- GLAZE 22K JA 1/10W    | R353     | 401 038 0919 | MT- GLAZE 220K JA 1/10W   |
| R136     | 401 037 5014 | MT- GLAZE 0. 000 ZA 1/10W | R354     | 401 024 7727 | CARBON 100K JA 1/6W       |
| R137     | 401 037 5212 | MT- GLAZE 100 JA 1/10W    | R355     | 401 012 9904 | CARBON 10M JA 1/4W        |
| R138     | 401 038 7710 | MT- GLAZE 5. 6K JA 1/10W  | R356     | 401 037 5212 | MT- GLAZE 100 JA 1/10W    |
| R141     | 401 038 9219 | MT- GLAZE 6. 8K JA 1/10W  | R357     | 401 037 5618 | MT- GLAZE 10K JA 1/10W    |
| R150     | 401 024 7024 | CARBON 1K JA 1/6W         | R361     | 401 038 5419 | MT- GLAZE 390K JA 1/10W   |
| R151     | 401 022 1935 | CARBON 680 JA 1/4W        | R363     | 401 038 0810 | MT- GLAZE 22K JA 1/10W    |
| R152     | 401 025 3827 | CARBON 180 JA 1/6W        | R364     | 401 037 5212 | MT- GLAZE 100 JA 1/10W    |
| R153     | 401 037 5410 | MT- GLAZE 1K JA 1/10W     | R365     | 401 038 6416 | MT- GLAZE 4. 7K JA 1/10W  |
| R154     | 401 038 7611 | MT- GLAZE 560 JA 1/10W    | R431     | 401 038 3514 | MT- GLAZE 330 JA 1/10W    |

| Ref. No. | Part No.     | Description               | Ref. No. | Part No.     | Description               |
|----------|--------------|---------------------------|----------|--------------|---------------------------|
| R432     | 401 037 5410 | MT- GLAZE 1K JA 1/10W     | R685     | 401 025 8228 | CARBON 22K JA 1/6W        |
| R433     | 401 007 1134 | CARBON 1K JA 1/2W         | R800     | 401 016 3849 | CARBON 2. 2K JA 1/4W      |
| R434     | 401 067 9201 | OXI DE- MT 390 JA 2W      | R801     | 401 037 5014 | MT- GLAZE 0. 000 ZA 1/10W |
| R435     | 402 075 2307 | WI RE WOUND 10 JA 5W      | R802     | 401 038 0711 | MT- GLAZE 2. 2K JA 1/10W  |
| R436     | 401 012 7049 | CARBON 10K JA 1/4W        | R803     | 401 037 9418 | MT- GLAZE 180K JA 1/10W   |
| R441     | 401 058 3706 | OXI DE- MT 1K JA 1W       | R804     | 401 024 7430 | CARBON 10K JA 1/6W        |
| R447     | 401 026 9927 | CARBON 4K7 JA 1/6W        | R806     | 401 024 7430 | CARBON 10K JA 1/6W        |
| R448     | 401 009 5843 | CARBON 330 JA 1/2W        | R807     | 401 024 7430 | CARBON 10K JA 1/6W        |
| R451     | 401 064 5305 | OXI DE- MT 1. 5 JA 2W     | R808     | 401 019 1941 | CARBON 3K9 JA 1/4W        |
| R462     | 401 014 4145 | CARBON 1K5 JA 1/4W        | R811     | 401 016 3849 | CARBON 2. 2K JA 1/4W      |
| R463     | 401 025 1625 | CARBON 1K5 JA 1/6W        | R812     | 401 038 5112 | MT- GLAZE 3. 9K JA 1/10W  |
| R467     | 401 025 8723 | CARBON 220K JA 1/6W       | R813     | 401 018 4933 | CARBON 33K JA 1/4W        |
| R468     | 401 025 4220 | CARBON 1K8 JA 1/6W        | R815     | 401 012 4543 | CARBON 100 JA 1/4W        |
| R469     | 401 027 5928 | CARBON 68K JA 1/6W        | R816     | 401 038 9219 | MT- GLAZE 6. 8K JA 1/10W  |
| R470     | 401 027 0329 | CARBON 47K JA 1/6W        | R817     | 401 016 3849 | CARBON 2. 2K JA 1/4W      |
| R471     | 401 025 1625 | CARBON 1K5 JA 1/6W        | R817A    | 401 037 5014 | MT- GLAZE 0. 000 ZA 1/10W |
| R472     | 401 027 0329 | CARBON 47K JA 1/6W        | R818     | 401 038 9318 | MT- GLAZE 68K JA 1/10W    |
| R473     | 401 027 5225 | CARBON 680 JA 1/6W        | R819     | 401 016 3849 | CARBON 2. 2K JA 1/4W      |
| R474     | 401 009 0927 | CARBON 270 JA 1/2W        | R820     | 401 037 5618 | MT- GLAZE 10K JA 1/10W    |
| R481     | 401 015 4738 | CARBON 180K JA 1/4W       | R821     | 401 038 0810 | MT- GLAZE 22K JA 1/10W    |
| R482     | 401 027 2620 | CARBON 5K6 JA 1/6W        | R822     | 401 038 6515 | MT- GLAZE 47K JA 1/10W    |
| R501     | 401 020 2053 | CARBON 4. 7K JA 1/4W      | R823     | 401 013 5341 | CARBON 1K2 JA 1/4W        |
| R502     | 402 051 8705 | FUSI BLE RES 4. 7 J- 1/2W | R824     | 401 038 5112 | MT- GLAZE 3. 9K JA 1/10W  |
| R504     | 401 027 3023 | CARBON 56K JA 1/6W        | R825     | 401 038 3613 | MT- GLAZE 3. 3K JA 1/10W  |
| R505     | 401 026 7022 | CARBON 3K9 JA 1/6W        | R838     | 401 037 8015 | MT- GLAZE 15K JA 1/10W    |
| R506     | 401 026 7022 | CARBON 3K9 JA 1/6W        | R839     | 401 018 4933 | CARBON 33K JA 1/4W        |
| R507     | 401 027 8127 | CARBON 82 JA 1/6W         | R840     | 401 020 0841 | CARBON 470 JA 1/4W        |
| R508     | 401 025 7825 | CARBON 2K2 JA 1/6W        | R841     | 401 038 0810 | MT- GLAZE 22K JA 1/10W    |
| R509     | 401 057 7507 | OXI DE- MT 0. 82 JA 1W    | R842     | 401 020 2053 | CARBON 4. 7K JA 1/4W      |
| R511     | 401 062 1200 | OXI DE- MT 470 JA 1W      | R843     | 401 037 5618 | MT- GLAZE 10K JA 1/10W    |
| R513     | 401 058 3706 | OXI DE- MT 1K JA 1W       | R844     | 401 038 5112 | MT- GLAZE 3. 9K JA 1/10W  |
| R521     | 402 037 1805 | FUSI BLE RES 4. 7 J- 1W   | R845     | 401 037 5618 | MT- GLAZE 10K JA 1/10W    |
| R602     | 402 072 4403 | WI RE WOUND 3. 9 KA 7W    | R846     | 401 038 6416 | MT- GLAZE 4. 7K JA 1/10W  |
| R611     | 401 027 2620 | CARBON 5K6 JA 1/6W        | R847     | 401 037 5618 | MT- GLAZE 10K JA 1/10W    |
| R615     | 401 025 8228 | CARBON 22K JA 1/6W        | R848     | 401 038 6416 | MT- GLAZE 4. 7K JA 1/10W  |
| R617     | 401 024 7024 | CARBON 1K JA 1/6W         | R851     | 401 037 5410 | MT- GLAZE 1K JA 1/10W     |
| R619     | 401 016 1538 | CARBON 22 JA 1/4W         | R852     | 401 037 5410 | MT- GLAZE 1K JA 1/10W     |
| R620     | 401 007 5815 | CARBON 120K JA 1/2W       | R853     | 401 038 0810 | MT- GLAZE 22K JA 1/10W    |
| R621     | 401 007 5815 | CARBON 120K JA 1/2W       | R861     | 401 038 2111 | MT- GLAZE 2. 7K JA 1/10W  |
| R622     | 401 014 5241 | CARBON 15K JA 1/4W        | R862     | 401 038 0810 | MT- GLAZE 22K JA 1/10W    |
| R623     | 401 025 4220 | CARBON 1K8 JA 1/6W        | R863     | 401 038 0810 | MT- GLAZE 22K JA 1/10W    |
| R624     | 401 068 6902 | OXI DE- MT 56 JA 2W       | R864     | 401 038 9011 | MT- GLAZE 680 JA 1/10W    |
| R625     | 401 065 9609 | OXI DE- MT 18 JA 2W       | R865     | 401 038 0711 | MT- GLAZE 2. 2K JA 1/10W  |
| R626     | 401 016 3344 | QARBON 2. 2K GA 1/4W      | R866     | 401 038 0711 | MT- GLAZE 2. 2K JA 1/10W  |
| △ R631   | 402 000 8602 | SOLI D 5. 6M KA 1/2W      | R867     | 401 038 0711 | MT- GLAZE 2. 2K JA 1/10W  |
| △ R632   | 402 000 8602 | SOLI D 5. 6M KA 1/2W      | R868     | 401 037 6714 | MT- GLAZE 1. 2K JA 1/10W  |
| R641     | 401 014 6149 | CARBON 150K JA 1/4W       | R869     | 401 038 2210 | MT- GLAZE 27K JA 1/10W    |
| R642     | 401 027 4327 | CARBON 6. 2K JA 1/6W      | R870     | 401 016 4836 | CARBON 22K JA 1/4W        |
| R643     | 401 015 4738 | CARBON 180K JA 1/4W       | R870A    | 401 037 5014 | MT- GLAZE 0. 000 ZA 1/10W |
| R644     | 401 011 2718 | CARBON 68K JA 1/2W        | R871     | 401 038 6416 | MT- GLAZE 4. 7K JA 1/10W  |
| R645     | 401 025 8228 | CARBON 22K JA 1/6W        | R872     | 401 038 3712 | MT- GLAZE 33K JA 1/10W    |
| R646     | 402 069 9800 | WI RE WOUND 2. 7 KA 5W    | R873     | 401 038 6416 | MT- GLAZE 4. 7K JA 1/10W  |
| R647     | 402 076 0609 | WI RE WOUND 8. 2 KA 7W    | R874     | 401 037 5618 | MT- GLAZE 10K JA 1/10W    |
| R648     | 401 026 9927 | CARBON 4K7 JA 1/6W        | R875     | 401 038 7710 | MT- GLAZE 5. 6K JA 1/10W  |
| R651     | 401 064 3806 | OXI DE- MT 1 JA 2W        | R876     | 401 037 5618 | MT- GLAZE 10K JA 1/10W    |
| R652     | 401 065 1801 | OXI DE- MT 12 JA 2W       | R877     | 401 039 0413 | MT- GLAZE 8. 2K JA 1/10W  |
| R653     | 401 067 8204 | OXI DE- MT 39 JA 2W       | R878     | 401 037 7919 | MT- GLAZE 1. 5K JA 1/10W  |
| R655     | 401 065 5809 | OXI DE- MT 15 JA 2W       | R879     | 401 037 5618 | MT- GLAZE 10K JA 1/10W    |
| R661     | 401 068 4700 | OXI DE- MT 4. 7K JA 2W    | R880     | 401 038 6515 | MT- GLAZE 47K JA 1/10W    |
| R662     | 401 068 8807 | OXI DE- MT 5. 6K JA 2W    | R884     | 401 037 7810 | MT- GLAZE 150 JA 1/10W    |
| R681     | 401 008 1628 | CARBON 1K8 JA 1/2W        | R885     | 401 038 5112 | MT- GLAZE 3. 9K JA 1/10W  |
| R682     | 401 069 1708 | OXI DE- MT 68 JA 2W       | R886     | 401 037 7810 | MT- GLAZE 150 JA 1/10W    |
| R684     | 401 023 2842 | CARBON 8K2 JA 1/4W        | R887     | 401 038 5112 | MT- GLAZE 3. 9K JA 1/10W  |

| Ref. No.                 | Part No.     | Description              | Ref. No.     | Part No.     | Description             |
|--------------------------|--------------|--------------------------|--------------|--------------|-------------------------|
| R888                     | 401 037 5212 | MT- GLAZE 100 JA 1/10W   | L642         | 645 002 4511 | CORE, PIPE              |
| R889                     | 401 037 5212 | MT- GLAZE 100 JA 1/10W   | L643         | 645 002 4511 | CORE, PIPE              |
| R891                     | 401 038 6416 | MT- GLAZE 4. 7K JA 1/10W | L871         | 645 008 2962 | PEAKING COIL 5. 6UH K   |
| R892                     | 401 038 6416 | MT- GLAZE 4. 7K JA 1/10W | L881         | 645 012 8707 | PEAKING COIL 1. 5UH M   |
| R893                     | 401 037 5410 | MT- GLAZE 1K JA 1/10W    |              |              |                         |
| R894                     | 401 037 5410 | MT- GLAZE 1K JA 1/10W    |              |              |                         |
| R895                     | 401 037 6714 | MT- GLAZE 1. 2K JA 1/10W |              |              |                         |
| R897                     | 401 012 5748 | CARBON 1K JA 1/4W        |              |              |                         |
| R898                     | 401 012 5748 | CARBON 1K JA 1/4W        |              |              |                         |
| <b>VARIABLE RESISTOR</b> |              |                          | <b>DIODE</b> |              |                         |
| VR131                    | 645 003 5531 | VR 10K ALPS              | D1005        | 407 063 8319 | ZENER DIODE MTZJ11C     |
| VR361                    | 645 003 5531 | VR 10K ALPS              | D1007        | 407 063 8319 | ZENER DIODE MTZJ11C     |
| VR462                    | 645 003 5616 | VR 4. 7K ALPS            | D1008        | 407 063 8319 | ZENER DIODE MTZJ11C     |
| VR501                    | 645 006 5231 | VR 100 ALPS              | D1010        | 407 063 8319 | ZENER DIODE MTZJ11C     |
| VR641                    | 645 003 5579 | VR 2. 2K ALPS            | D1011        | 407 063 8319 | ZENER DIODE MTZJ11C     |
| <b>TRANSFORMER</b>       |              |                          | D1021        | 407 063 8319 | ZENER DIODE MTZJ11C     |
| T141                     | 610 037 4522 | S COIL                   | D1022        | 407 063 8319 | ZENER DIODE MTZJ11C     |
| T431                     | 610 223 1656 | DRIVE TRANS              | D1023        | 407 063 8319 | ZENER DIODE MTZJ11C     |
| △ T451                   | 645 021 2741 | TRANS, FLYBACK - MEXICO  | D1024        | 407 063 8319 | ZENER DIODE MTZJ11C     |
| △ T611                   | 645 015 7653 | TRANS, POWER, PULSE      | D1026        | 407 063 8319 | ZENER DIODE MTZJ11C     |
| △ T681                   | 610 033 3758 | POWER TRANS              | D1027        | 407 063 8319 | ZENER DIODE MTZJ11C     |
| <b>COIL</b>              |              |                          | D1101        | 407 063 8319 | ZENER DIODE MTZJ11C     |
| L001                     | 645 008 5635 | INDUCTOR, 12U K          | D1201        | 407 053 6803 | ZENER DIODE MTZ5. 6C    |
| L002                     | 645 008 5635 | INDUCTOR, 12U K          | D135         | 407 063 8319 | ZENER DIODE MTZJ11C     |
| L003                     | 645 002 4511 | CORE, PIPE               | D1901-1      | 610 269 4710 | HOLDER LED A- G2CA      |
| L1002                    | 645 002 4511 | CORE, PIPE               | D1901-2      | 610 262 2652 | LED SPACER- F2ZTM       |
| L1003                    | 645 001 4550 | PEAKING COIL 10UHK       | D1901A       | 407 116 6504 | LED SLP- 181B- 51       |
| L1004                    | 645 001 4550 | PEAKING COIL 10UHK       | D1903        | 407 063 8319 | ZENER DIODE MTZJ11C     |
| L1005                    | 645 001 4550 | PEAKING COIL 10UHK       | D1905        | 407 012 4416 | DIODE 1SS133- T- 77     |
| L1006                    | 645 001 4550 | PEAKING COIL 10UHK       | D201         | 407 063 8319 | ZENER DIODE MTZJ11C     |
| L101                     | 645 001 4710 | PEAKING COIL 10UH J      | D202         | 407 063 8319 | ZENER DIODE MTZJ11C     |
| L102                     | 645 001 5656 | PEAKING COIL 4. 7UH K    | D203         | 407 063 8319 | ZENER DIODE MTZJ11C     |
| L1022                    | 645 002 4511 | CORE, PIPE               | D210         | 407 012 4416 | DIODE 1SS133- T- 77     |
| L1023                    | 645 001 4550 | PEAKING COIL 10UHK       | D221         | 407 012 4416 | DIODE 1SS133- T- 77     |
| L1024                    | 645 001 4550 | PEAKING COIL 10UHK       | D222         | 408 007 8607 | DIODE 1N4148            |
| L1025                    | 645 001 4550 | PEAKING COIL 10UHK       | D271         | 407 053 6407 | ZENER DIODE MTZ5. 1C    |
| L1026                    | 645 001 4550 | PEAKING COIL 10UHK       | D352         | 407 057 8308 | ZENER DIODE RD8. 2EB2   |
| L1027                    | 645 001 5656 | PEAKING COIL 4. 7UH K    | D361         | 407 063 8319 | ZENER DIODE MTZJ11C     |
| L1101                    | 645 001 4550 | PEAKING COIL 10UHK       | D431         | 407 053 8708 | ZENER DIODE MTZ9. 1A    |
| L1102                    | 645 001 4550 | PEAKING COIL 10UHK       | D432         | 407 005 7328 | DIODE EMO1Z             |
| L1103                    | 645 001 5656 | PEAKING COIL 4. 7UH K    | D438         | 407 095 8001 | DIODE ERD07- 15L        |
| L141                     | 645 001 4550 | PEAKING COIL 10UHK       | D439         | 407 006 4128 | DIODE ERB44- 04V1       |
| L151                     | 645 002 1534 | PEAKING COIL 8. 2UHK     | D442         | 408 007 8607 | DIODE 1N4148            |
| L152                     | 645 002 1459 | PEAKING COIL             | D445         | 407 012 4416 | DIODE 1SS133- T- 77     |
| L201                     | 645 001 4710 | PEAKING COIL 10UH J      | D446         | 407 151 9003 | ZENER DIODE UZ- 7. 5BCC |
| L202                     | 645 001 4710 | PEAKING COIL 10UH J      | D464         | 407 053 6605 | ZENER DIODE MTZ5. 6A    |
| L203                     | 645 001 4710 | PEAKING COIL 10UH J      | D465         | 407 012 4416 | DIODE 1SS133- T- 77     |
| L231                     | 645 001 5656 | PEAKING COIL 4. 7UH K    | D466         | 407 077 9705 | ZENER DIODE MTZ20A      |
| L232                     | 645 003 8518 | PEAKING COIL             | D469         | 407 007 7415 | DIODE EU1               |
| L431                     | 645 008 5628 | INDUCTOR, 1U M           | D481         | 407 007 7415 | DIODE EU1               |
| L432                     | 645 002 4511 | CORE, PIPE               | D482         | 407 012 4416 | DIODE 1SS133- T- 77     |
| L441                     | 610 000 1046 | LINEARITY COIL           | D501         | 407 005 7328 | DIODE EMO1Z             |
| L442                     | 610 219 0342 | COIL                     | D502         | 407 118 2217 | ZENER DIODE 1Z75        |
| L461                     | 645 005 5645 | INDUCTOR 222UH K         | D603         | 407 009 6921 | DIODE RM11C             |
| L462                     | 610 000 0261 | COIL                     | D604         | 407 009 6921 | DIODE RM11C             |
| L501                     | 645 008 5642 | INDUCTOR, 3. 3U K        | D605         | 407 009 6921 | DIODE RM11C             |
| △ L601                   | 645 017 1260 | ELF 18D431F LINE FILTER  | D606         | 407 009 6921 | DIODE RM11C             |
| L607                     | 610 237 1000 | PIPE CORE                | D614         | 408 007 8607 | DIODE 1N4148            |
| L608                     | 610 237 1000 | PIPE CORE                | △ D615       | 408 009 8407 | PHOTO COUPLE CNY17GF- 3 |
| L641                     | 645 002 4511 | CORE, PIPE               | D616         | 408 007 8607 | DIODE 1N4148            |
|                          |              |                          | D617         | 407 007 6616 | DIODE ES1               |
|                          |              |                          | D618         | 408 007 8607 | DIODE 1N4148            |
|                          |              |                          | D619         | 407 053 3000 | ZENER DIODE MTZ11C      |
|                          |              |                          | D641         | 407 009 8816 | DIODE RU3AM             |
|                          |              |                          | D642         | 407 007 7613 | DIODE EU2               |
|                          |              |                          | D643         | 407 166 2303 | DIODE ERC- 91- 02L      |
|                          |              |                          | D644         | 407 166 2303 | DIODE ERC- 91- 02L      |

| Ref. No.             | Part No.     | Description               | Ref. No.   | Part No.     | Description            |
|----------------------|--------------|---------------------------|--|--------------|------------------------|
| D645                 | 407 053 7206 | ZENER DIODE MTZ6. 2C      | K1002  | 645 005 5867 | 21-PIN SOCKET          |
| D647                 | 407 012 4416 | DIODE 1SS133-T-77         | K1002Z   | 610 261 2813 | MOUNTING BRKT-F2W      |
| D648                 | 407 099 8601 | ZENER DIODE MTZJ24A       | K1101  | 645 016 6433 | JACK, RCA- 3           |
| D651                 | 407 005 7328 | DIODE EMO1Z               | △ PS601  | 408 013 3801 | TH PTH451C262BF140M270 |
| D654                 | 407 012 4416 | DIODE 1SS133-T-77         | SW1901   | 610 011 2698 | SWITCH, PUSH           |
| D661                 | 409 026 8005 | IC L5630                  | SW1902   | 610 011 2698 | SWITCH, PUSH           |
| D681                 | 407 005 7328 | DIODE EMO1Z               | SW1903   | 610 011 2698 | SWITCH, PUSH           |
| D682                 | 407 053 6803 | ZENER DIODE MTZ5. 6C      | SW1904   | 610 011 2698 | SWITCH, PUSH           |
| D683                 | 407 005 7328 | DIODE EMO1Z               | SW1905   | 610 011 2698 | SWITCH, PUSH           |
| D684                 | 408 007 8607 | DIODE 1N4148              | SW1906   | 610 011 2698 | SWITCH, PUSH           |
| D685                 | 407 012 4416 | DIODE 1SS133-T-77         | SW501  | 610 011 2728 | SWITCH, LEVER 1P-3T    |
| D831                 | 408 007 8607 | DIODE 1N4148              | △ SW601  | 645 024 0607 | PUSH SW POWER SDDFC3   |
| D861                 | 407 012 4416 | DIODE 1SS133-T-77         | T101   | 610 037 4508 | S COIL                 |
| D871                 | 407 012 4416 | DIODE 1SS133-T-77         | TP-A   | 645 008 4058 | TERMINAL PLUG          |
| D872                 | 407 055 7927 | ZENER DIODE RD3. 6EL      | TP-B   | 645 008 4058 | TERMINAL PLUG          |
|                      |              |                           | TP-D   | 645 008 4058 | TERMINAL PLUG          |
|                      |              |                           | TP-E   | 645 008 4058 | TERMINAL PLUG          |
|                      |              |                           | X131   | 421 002 2609 | SAW F TSF5315          |
|                      |              |                           | X152   | 645 000 4490 | TRAP, CERAMIC (6. 5W3) |
|                      |              |                           | X201   | 645 025 2631 | OSC, CRYSTAL 4. 43MHZ  |
|                      |              |                           | X871   | 645 018 9593 | OSC, CRYSTAL 12MHZ     |
|                      |              |                           | Y01  | 645 008 4058 | TERMINAL PLUG          |
|                      |              |                           | Y02  | 645 008 4058 | TERMINAL PLUG          |
|                      |              |                           | Y04  | 645 008 4058 | TERMINAL PLUG          |
|                      |              |                           | Y05  | 645 008 4058 | TERMINAL PLUG          |
|                      |              |                           | Y06  | 645 008 4058 | TERMINAL PLUG          |
|                      |              |                           | Y07  | 645 008 4058 | TERMINAL PLUG          |
|                      |              |                           | Y08  | 645 008 4058 | TERMINAL PLUG          |
|                      |              |                           | Y09  | 645 008 4058 | TERMINAL PLUG          |
|                      |              |                           | Y10  | 645 008 4058 | TERMINAL PLUG          |
|                      |              |                           | Y11  | 645 008 4058 | TERMINAL PLUG          |
|                      |              |                           | Z101   | 610 259 7813 | SHIELD CASE-A-F2RC     |
|                      |              |                           | Z102   | 610 259 7820 | SHIELD CASE-B-F2RC     |
| <b>MISCELLANEOUS</b> |              |                           | <div style="border: 1px solid black; padding: 5px;"> <p>All information in this manual is correct at the start of production. Sanyo reserves the right to modify components and procedures in order to comply with their continuous improvement policy.</p> </div> |              |                        |
| A101                 | 645 017 2571 | TUNER, HYPER ALPS         |  |              |                        |
| A1901                | 645 020 9277 | UNIT, REMCON RECEIVER     |  |              |                        |
| △ F601               | 423 022 2102 | FUSE 250V 4. 0A           |  |              |                        |
| F601A                | 645 000 5077 | HOLDER, FUSE              |  |              |                        |
| F601B                | 645 000 5077 | HOLDER, FUSE              |  |              |                        |
| J025                 | 401 037 5014 | MT- GLAZE 0. 000 ZA 1/10W |  |              |                        |
| J044                 | 401 037 5014 | MT- GLAZE 0. 000 ZA 1/10W |  |              |                        |
| J130                 | 401 037 5014 | MT- GLAZE 0. 000 ZA 1/10W |  |              |                        |
| J151                 | 401 037 5816 | MT- GLAZE 1M JA 1/10W     |  |              |                        |
| J194                 | 401 037 5014 | MT- GLAZE 0. 000 ZA 1/10W |  |              |                        |
| J225                 | 401 037 5014 | MT- GLAZE 0. 000 ZA 1/10W |  |              |                        |
| J226                 | 401 037 5014 | MT- GLAZE 0. 000 ZA 1/10W |  |              |                        |
| J231                 | 401 037 5014 | MT- GLAZE 0. 000 ZA 1/10W |  |              |                        |
| J232                 | 401 037 5014 | MT- GLAZE 0. 000 ZA 1/10W |  |              |                        |
| J233                 | 401 037 5014 | MT- GLAZE 0. 000 ZA 1/10W |  |              |                        |
| J234                 | 401 037 5014 | MT- GLAZE 0. 000 ZA 1/10W |  |              |                        |
| J235                 | 401 037 5014 | MT- GLAZE 0. 000 ZA 1/10W |  |              |                        |
| J236                 | 401 037 5014 | MT- GLAZE 0. 000 ZA 1/10W |  |              |                        |
| J237                 | 401 037 5014 | MT- GLAZE 0. 000 ZA 1/10W |  |              |                        |
| J238                 | 401 037 5014 | MT- GLAZE 0. 000 ZA 1/10W |  |              |                        |
| J239                 | 401 037 5014 | MT- GLAZE 0. 000 ZA 1/10W |  |              |                        |
| J240                 | 401 037 5014 | MT- GLAZE 0. 000 ZA 1/10W |  |              |                        |
| J241                 | 401 037 5014 | MT- GLAZE 0. 000 ZA 1/10W |  |              |                        |
| J242                 | 401 037 5014 | MT- GLAZE 0. 000 ZA 1/10W |  |              |                        |
| J244                 | 401 037 5014 | MT- GLAZE 0. 000 ZA 1/10W |  |              |                        |
| J245                 | 401 037 5014 | MT- GLAZE 0. 000 ZA 1/10W |  |              |                        |
| J247                 | 401 037 5014 | MT- GLAZE 0. 000 ZA 1/10W |  |              |                        |
| J248                 | 401 037 5014 | MT- GLAZE 0. 000 ZA 1/10W |  |              |                        |
| DY- 1                | 645 008 4058 | TERMINAL PLUG             |  |              |                        |
| DY- 3                | 645 008 4058 | TERMINAL PLUG             |  |              |                        |
| KDY- 5               | 645 008 4058 | TERMINAL PLUG             |  |              |                        |
| KDY- 6               | 645 008 4058 | TERMINAL PLUG             |  |              |                        |
| KE- 1                | 645 008 4058 | TERMINAL PLUG             |  |              |                        |
| KE- 2                | 645 008 4058 | TERMINAL PLUG             |  |              |                        |
| KF- 1                | 645 008 4058 | TERMINAL PLUG             |  |              |                        |
| KF- 2                | 645 008 4058 | TERMINAL PLUG             |  |              |                        |
| KL                   | 645 004 2881 | PLUG, 2P                  |  |              |                        |
| KP                   | 645 008 7288 | HOUSING PLUG 5P           |  |              |                        |
| KQ                   | 645 008 7264 | HOUSING PLUG 3P           |  |              |                        |
| KR- 1                | 645 008 4058 | TERMINAL PLUG             |  |              |                        |
| KR- 2                | 645 008 4058 | TERMINAL PLUG             |  |              |                        |
| KSC                  | 645 008 4058 | TERMINAL PLUG             |  |              |                        |
| K001                 | 645 005 5706 | PHONE JACK HTJ- 035- 10AB |  |              |                        |
| K10B                 | 645 008 7288 | HOUSING PLUG 5P           |  |              |                        |
| K1001                | 645 005 5867 | 21-PIN SOCKET             |  |              |                        |
| K1001Z               | 610 261 2813 | MOUNTING BRKT-F2W         |  |              |                        |



Sanyo Industries (UK) Ltd  
Printed in UK